

## Software-Update Palamat Premium (EN)

10 easy steps to install the Palamat Premium update (approx. 5 minutes):

### 0. Preparation:

#### Laptop with internet connection (Mini-USB-B)

You will need a laptop or PC with an internet connection and a mini-USB-B cable.

### 1. Website Kulzer (click link below)

Please download the software installation module incl. our latest software version for the Palamat Premium device from the following link:

[kulzer.com/palamatpremiumupdate](https://kulzer.com/palamatpremiumupdate)

### 2. Extract and save software program

Extract & save the downloaded file on your laptop/ PC.

### 3. Open file

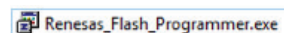
Open the extracted folder „Palamat Premium“.



### 4. Install Renesas\_Flash\_Programmer.exe

Install the software „Renesas\_Flash\_Programmer.exe“ on your laptop/ PC.

**Note:** The flash software is needed for using the update program (.rpj-file).



### 5. Connect Laptop and Palamat Premium with mini-USB cable

Connect the Palamat Premium device with your laptop/PC via mini-USB-plug (type: mini-USB-B).



### 6. Transfer Palamat Premium device in software update mode

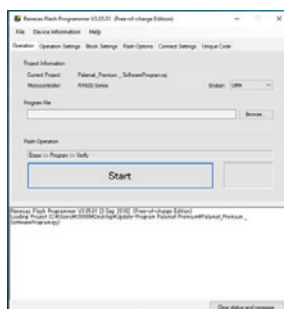
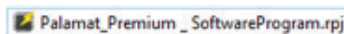
Press the two lower buttons of the Palamat Premium device and switch it on.



**Note:** the device is automatically running the Update-mode (black screen & main button is green). You can now release the buttons

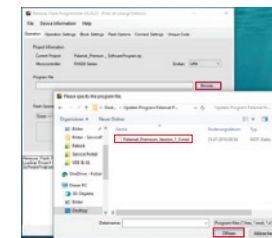
### 7. Run software update program

Execute the software „Palamat\_Premium\_SoftwareProgram.rpj“



### 8. Select current software version

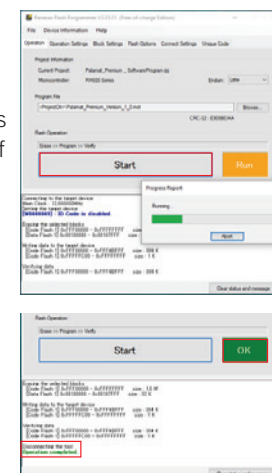
Activate the button „Browse..“ and select the current software version „Palamat\_Premium\_Version\_1.1.mot“.



**Note:** The software file is in the same folder as the „Update-Program Palamat Premium“.

### 9. Start transfer of updated software version

Start software transfer via button „Start“. The process takes a few seconds only. If the process is successfully finished, a green note „Operation completed“ & „OK“ appears.



### 10. Completion

You can now switch off the Palamat Premium device and disconnect the mini-USB-cable. To use the Palamat Premium with new software, turn on the main switch again.