

Lingualized occlusion with Delara posteriors

Giving a hand to oral health.



KULZER
MITSUI CHEMICALS GROUP

1. Lingualized occlusion with Delara easy way

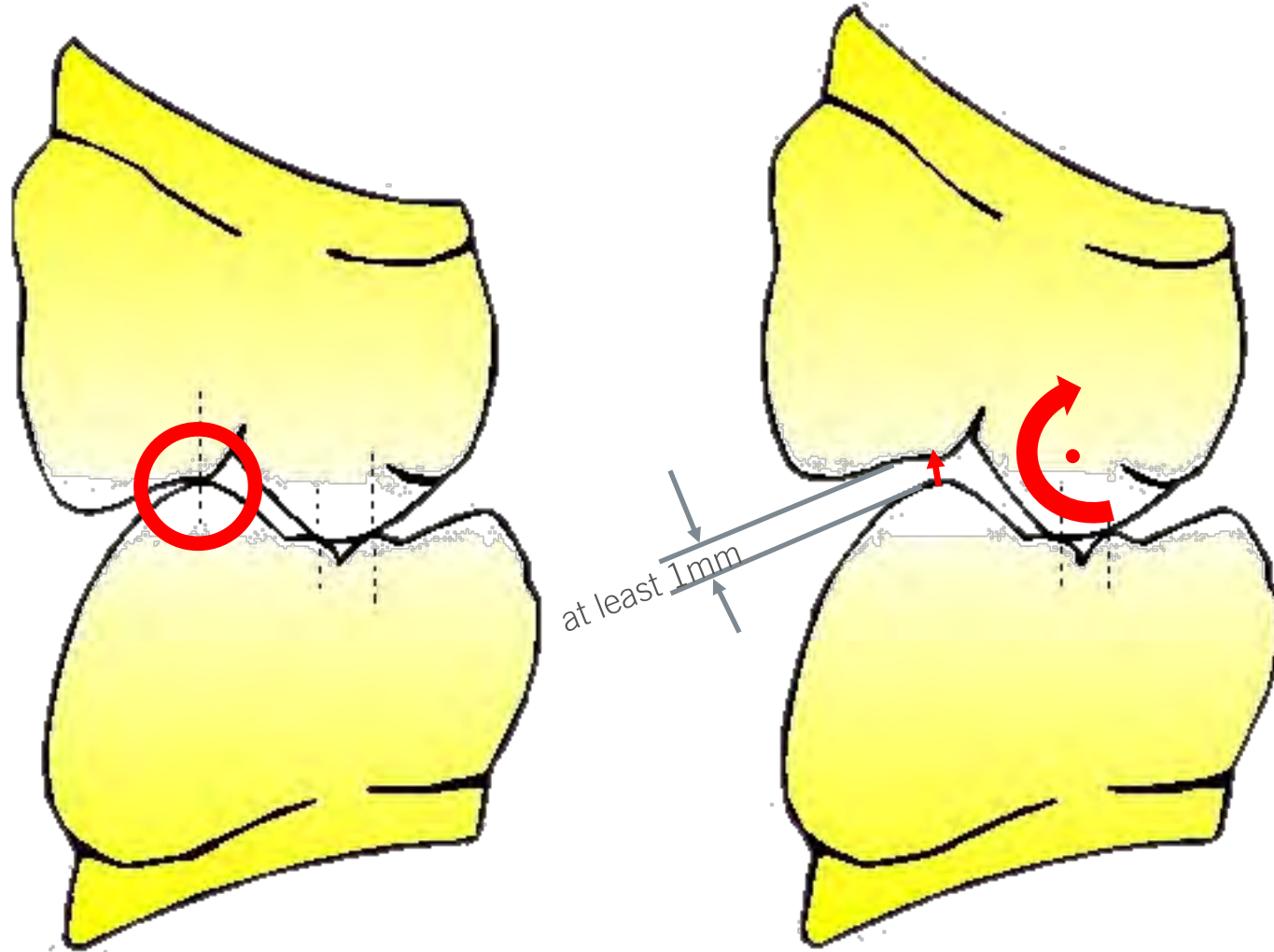
Giving a hand to oral health.

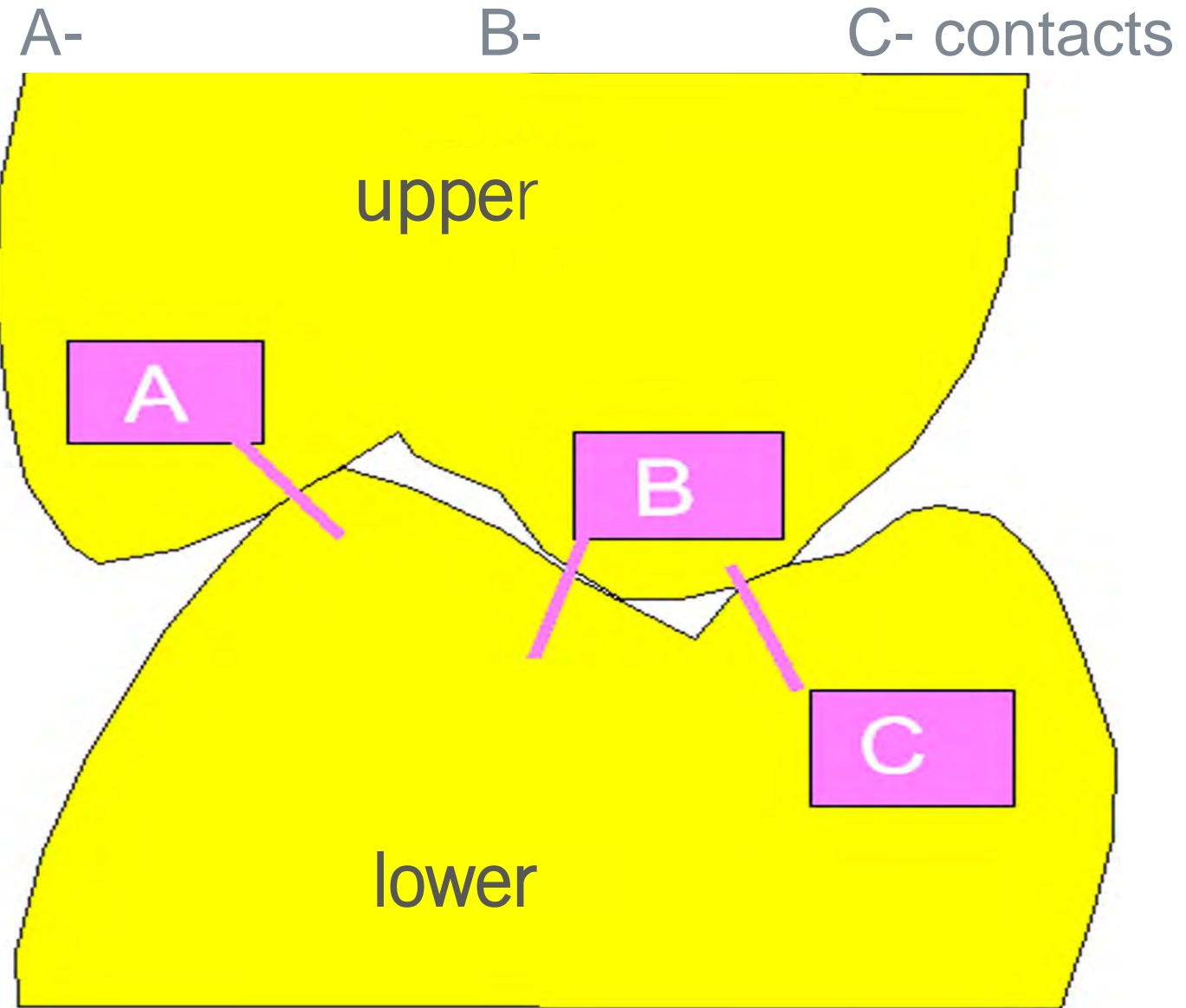


KULZER
MITSUI CHEMICALS GROUP

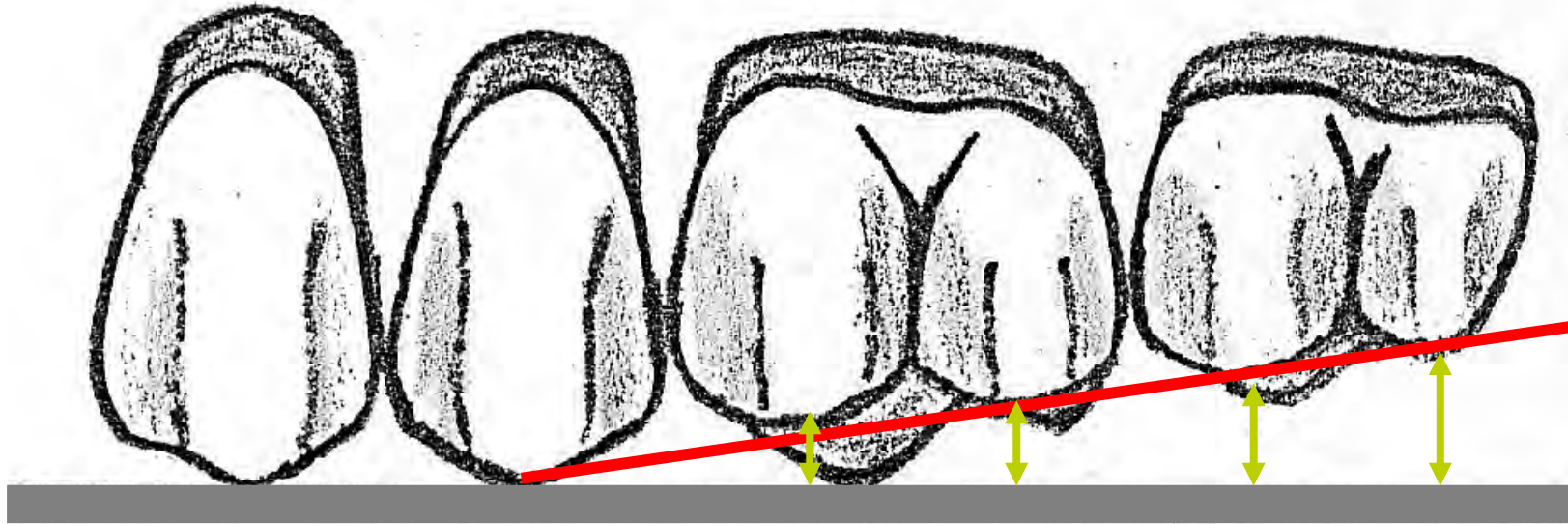
ordinary-

lingualized- setup





Setup according to Gysi



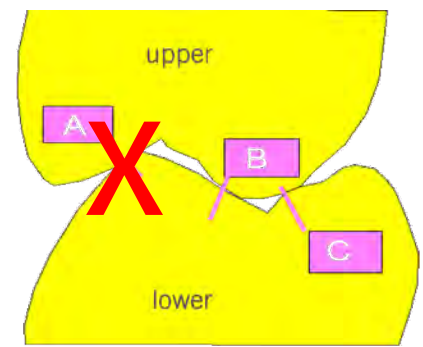
Distance cusp – plane at least **approx.** 1 mm 1,5 mm 2 mm 2,5 mm



Distance cusp – plane at least **approx.** 1 mm 1,5 mm 2 mm 2,5 mm

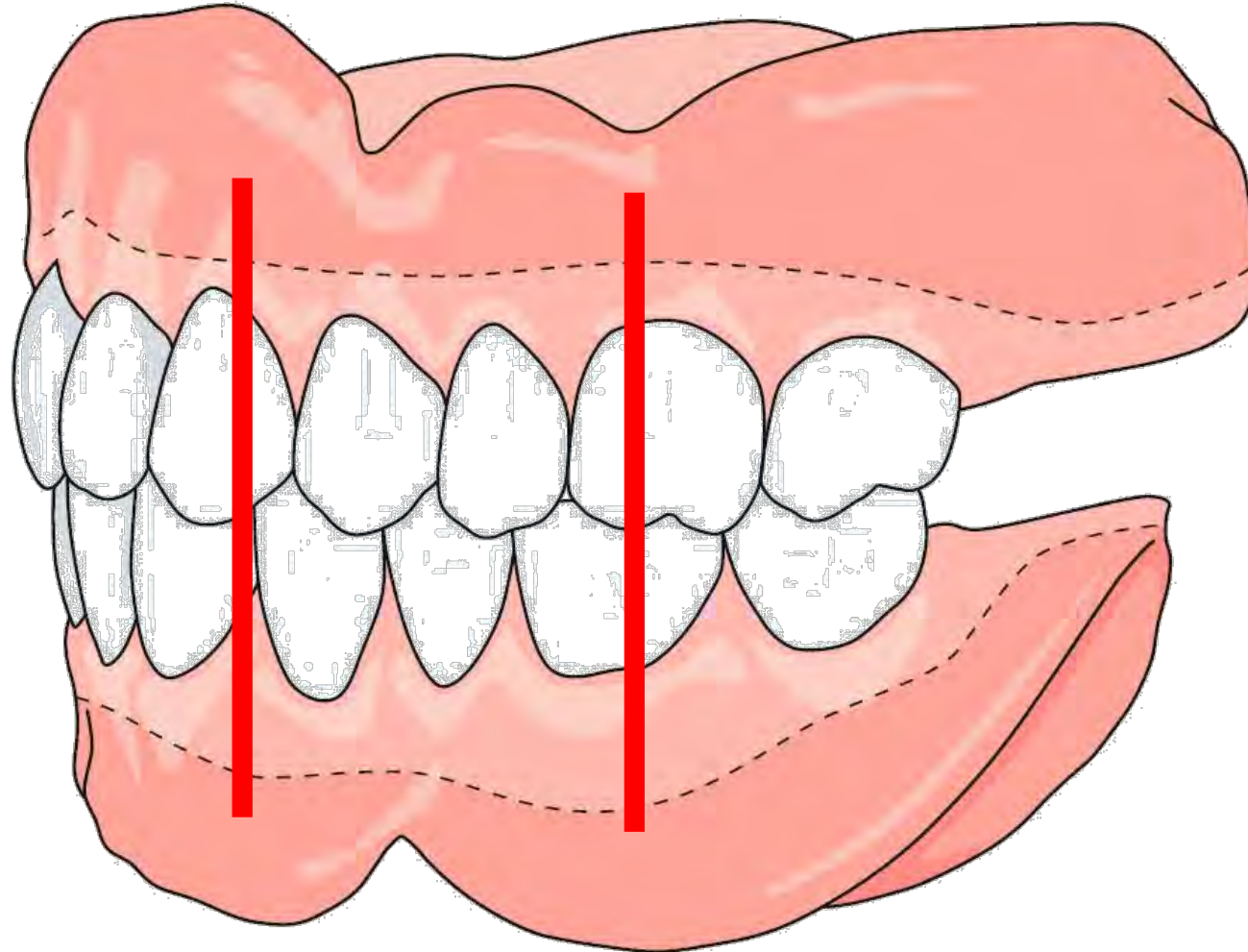


Distance of cusps approx. displayed on card

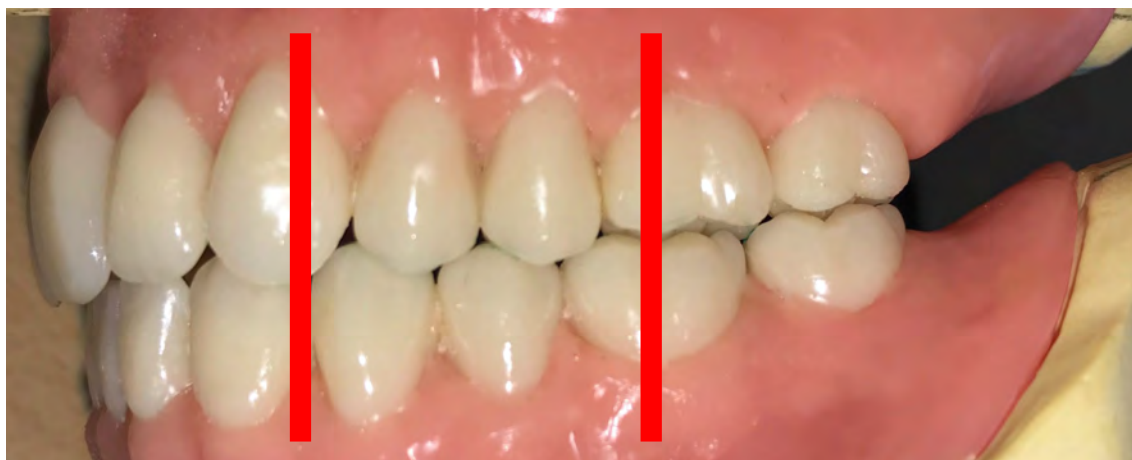


Lower posterior setup **without A contacts**

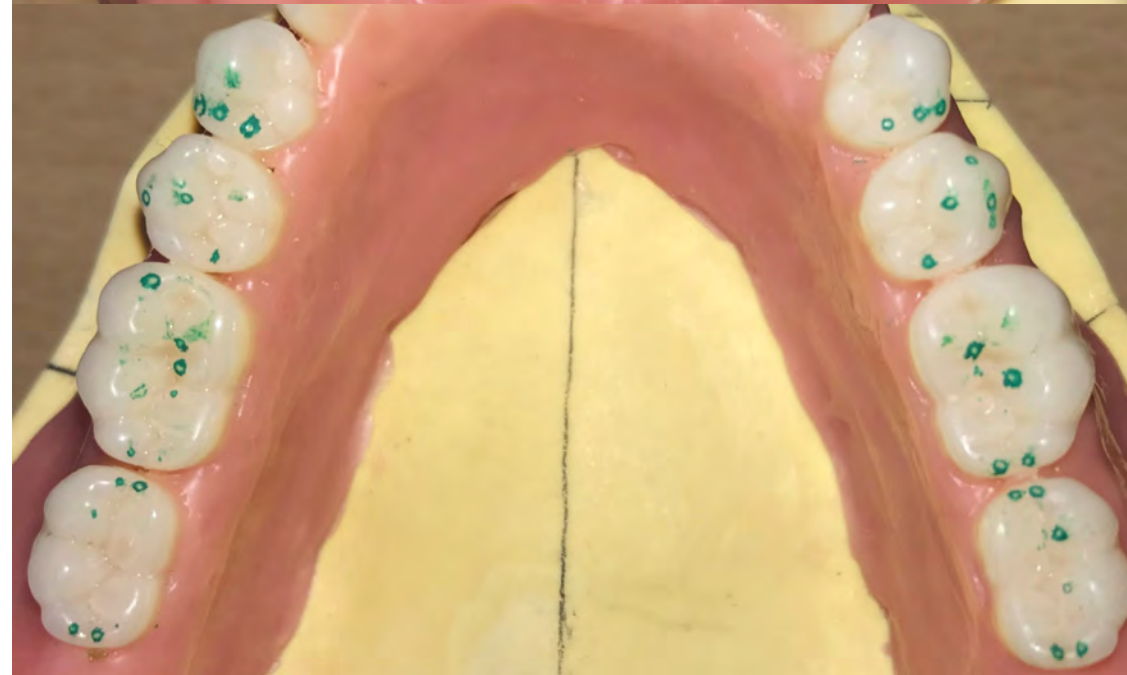
Usual bite marks in tooth-to-two-tooth-relation



Lingualized setup with Delara in tooth-to-two-tooth-relation



Lingualized occlusion **without A-contacts**, reduced **contact zone**



Contact zone

(Trick to avoid A-contact during setup and maintain cusp distance:
Tin foil)



2. Lingualized Occlusion with Delara acc. TiF®

Giving a hand to oral health.



KULZER
MITSUI CHEMICALS GROUP

Model analysis



Model analysis



Model analysis



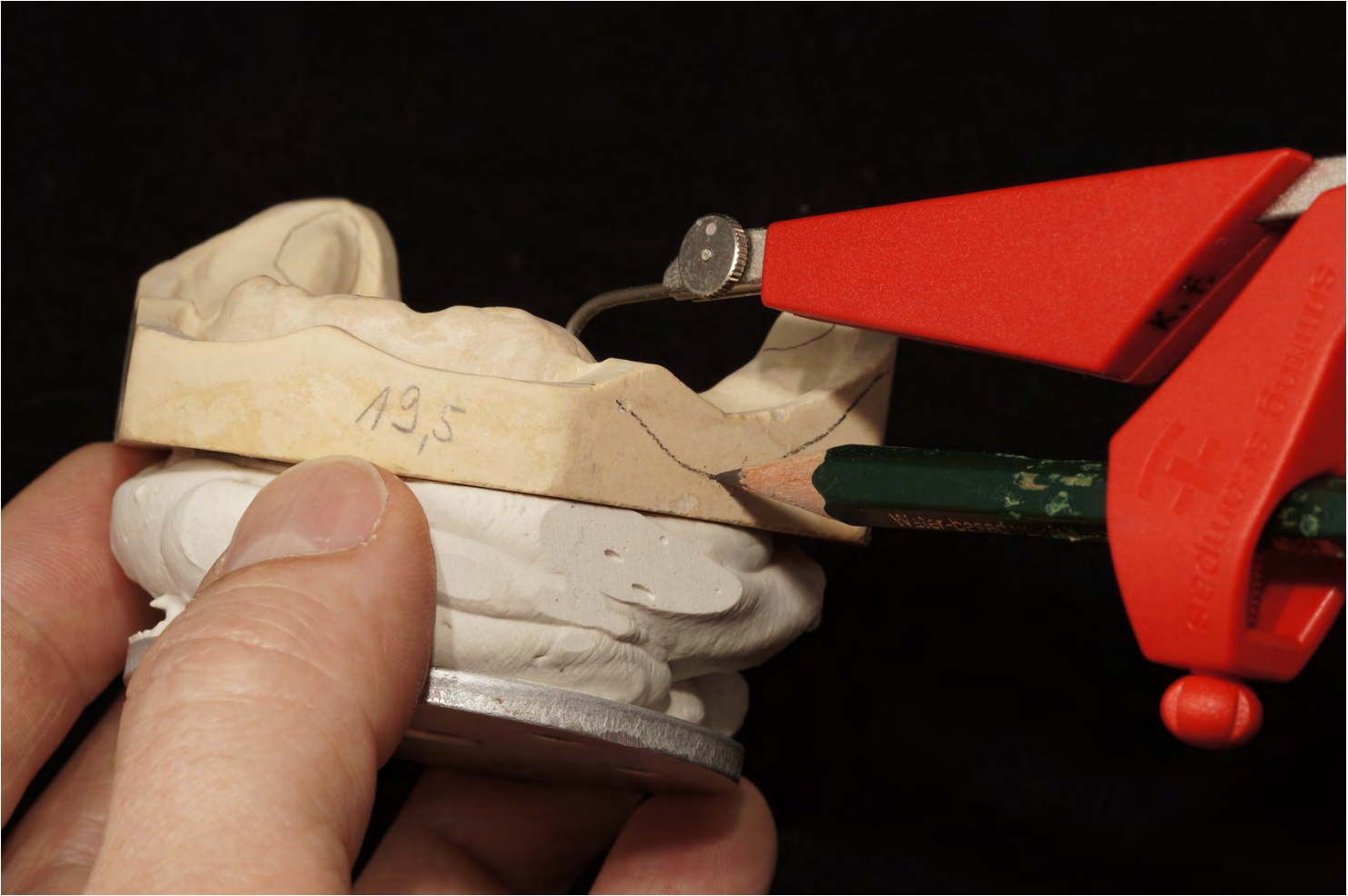
Model analysis



Model analysis



Model analysis



Model analysis



Model analysis



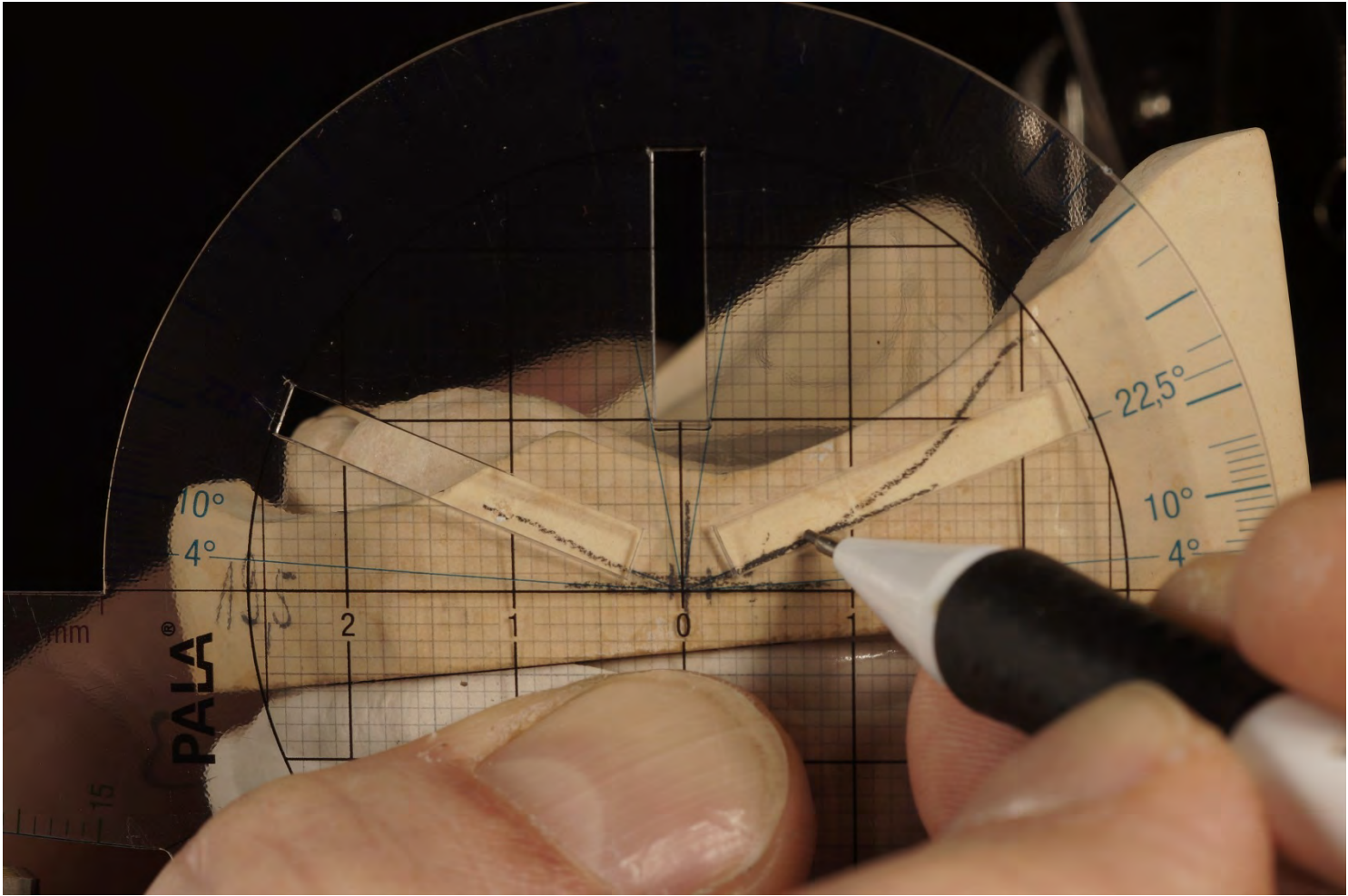
Model analysis



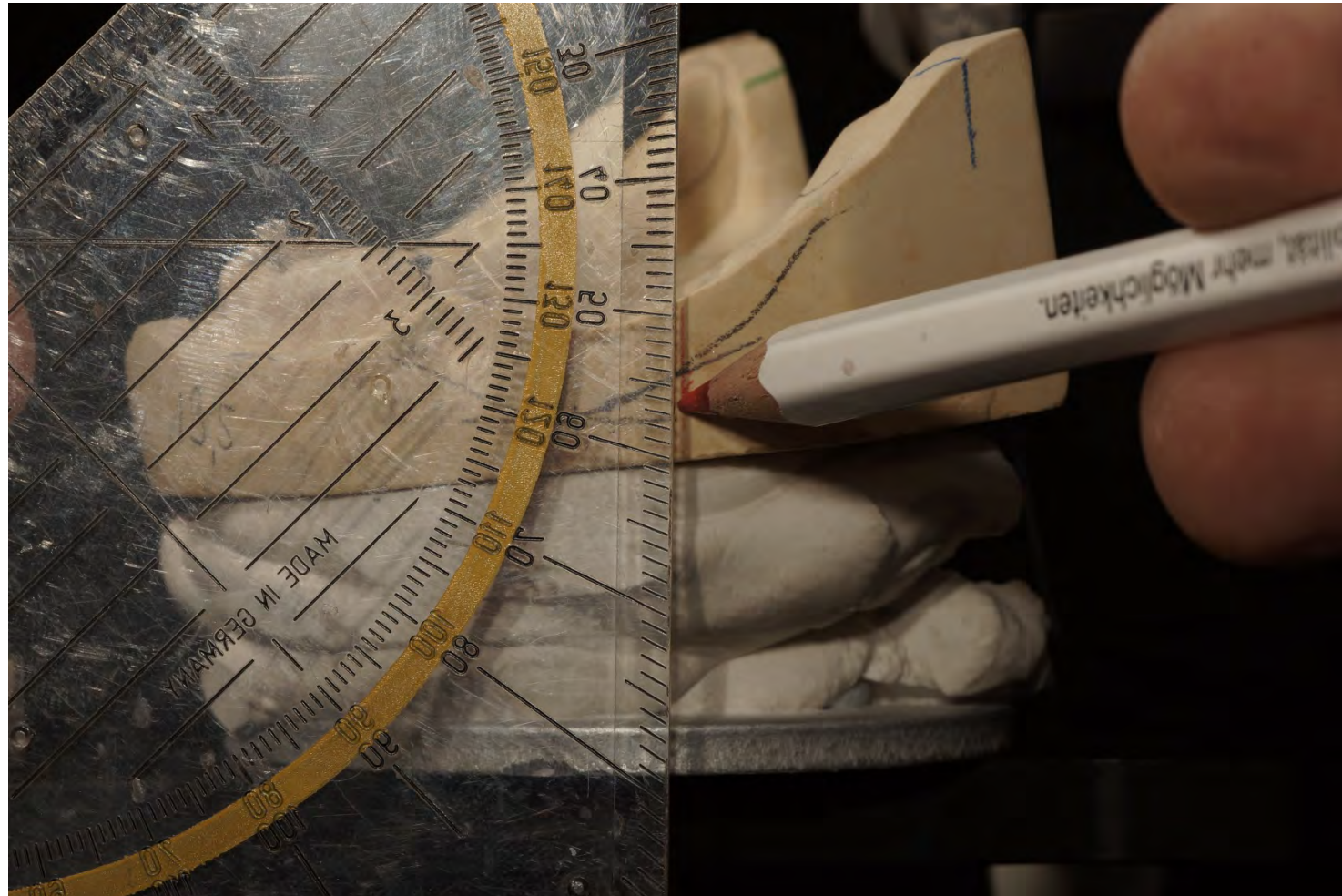
Model analysis



Model analysis



Model analysis



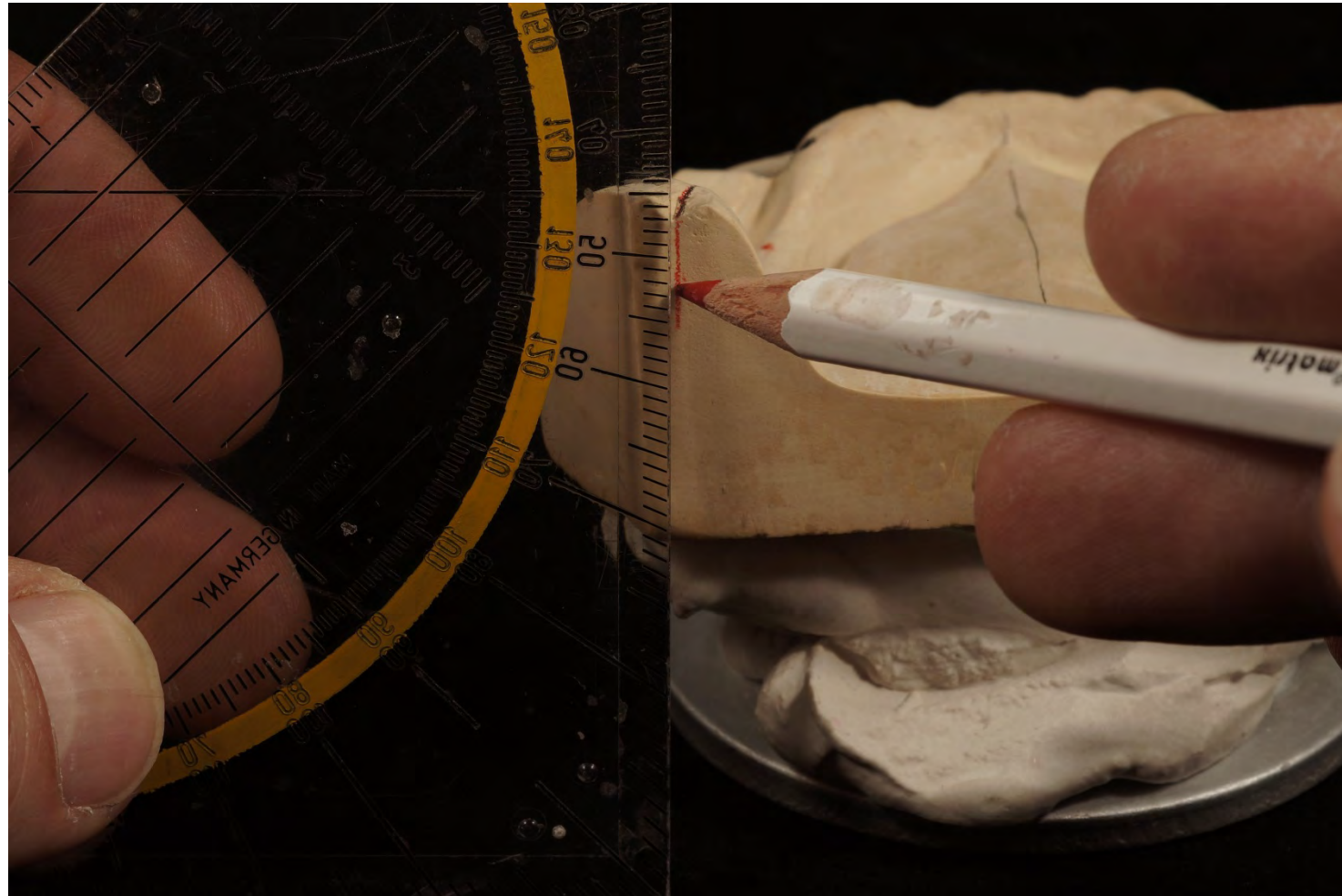
Model analysis



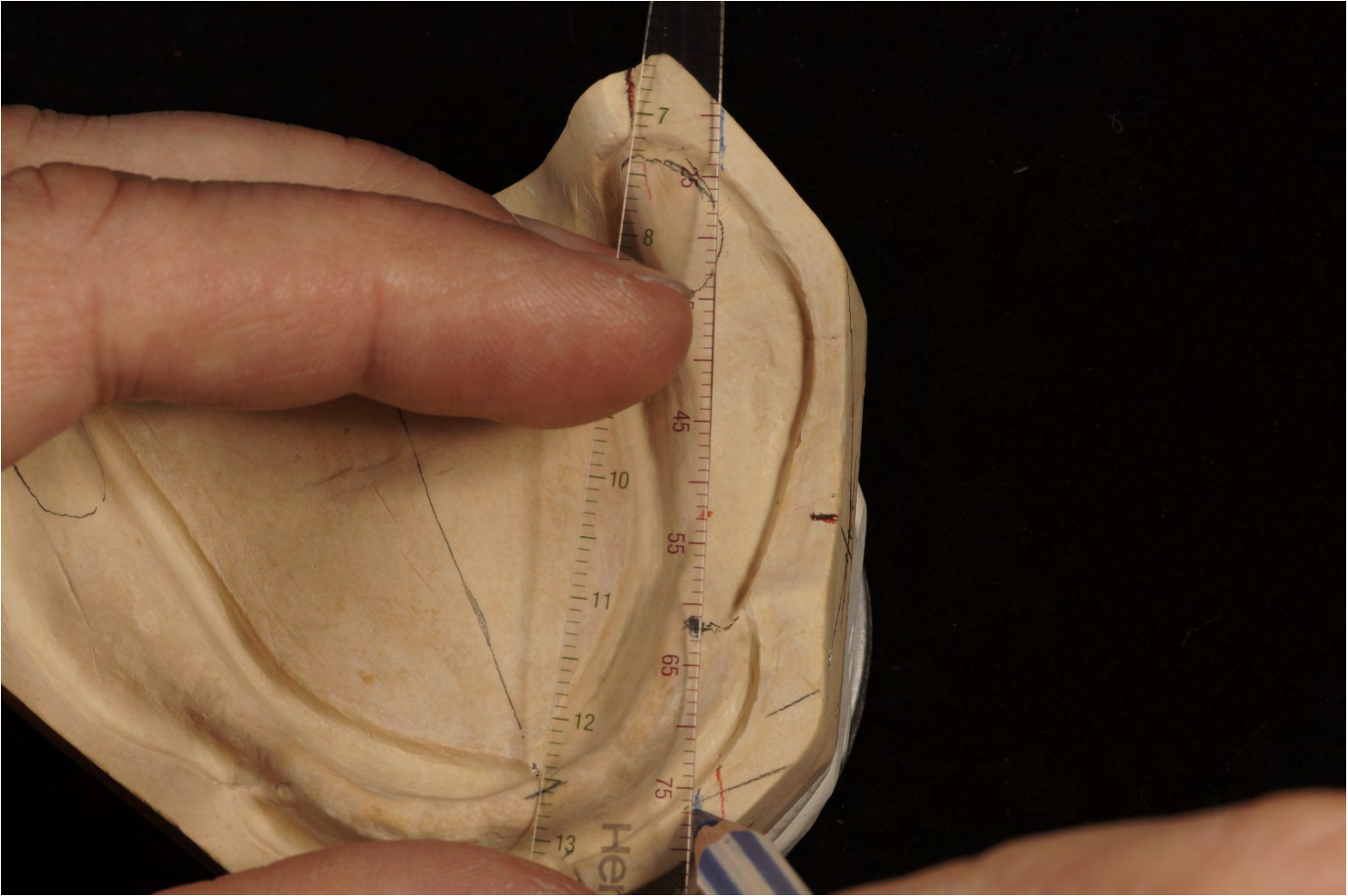
Model analysis



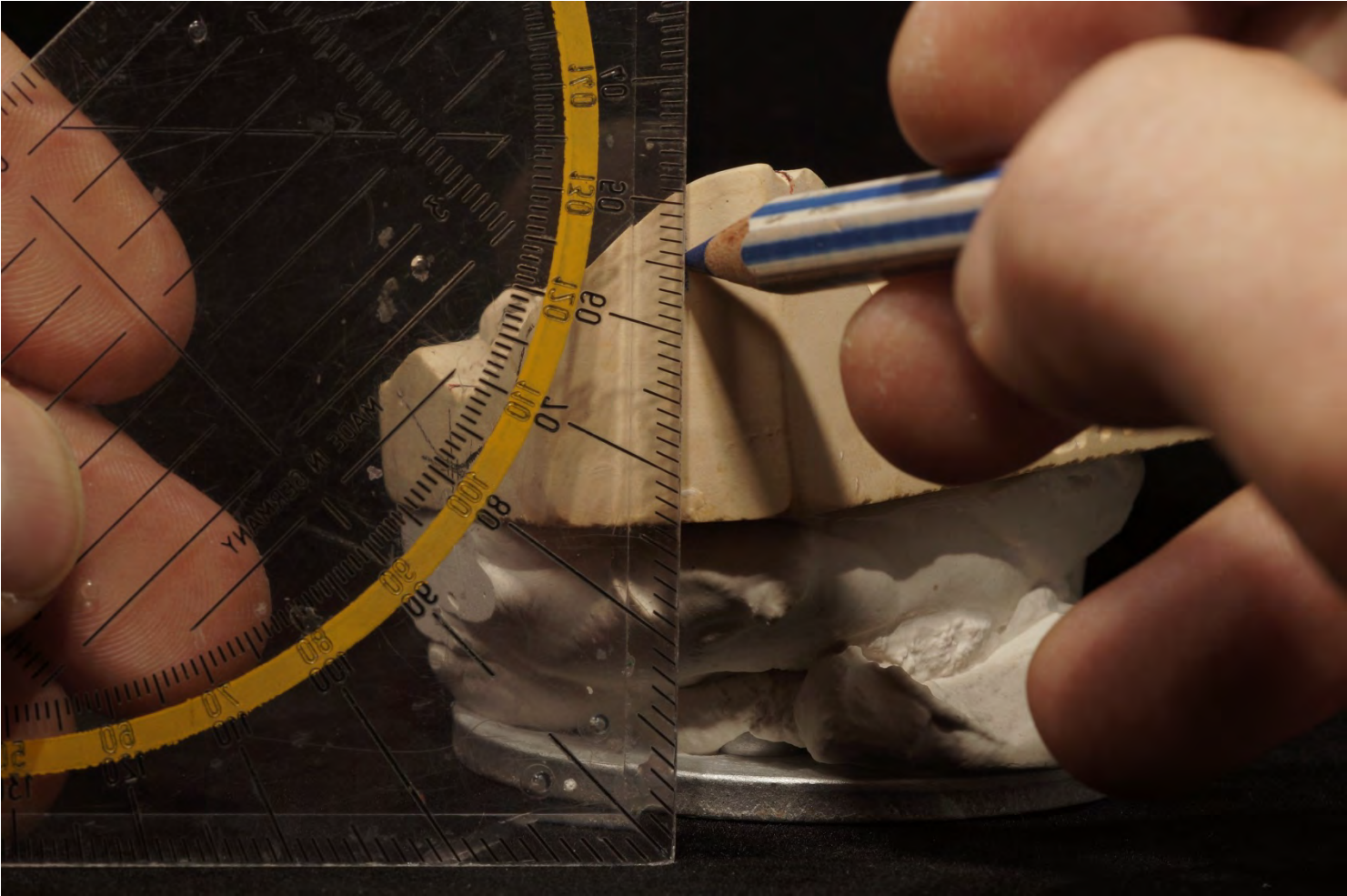
Model analysis



Model analysis



Model analysis



Model analysis



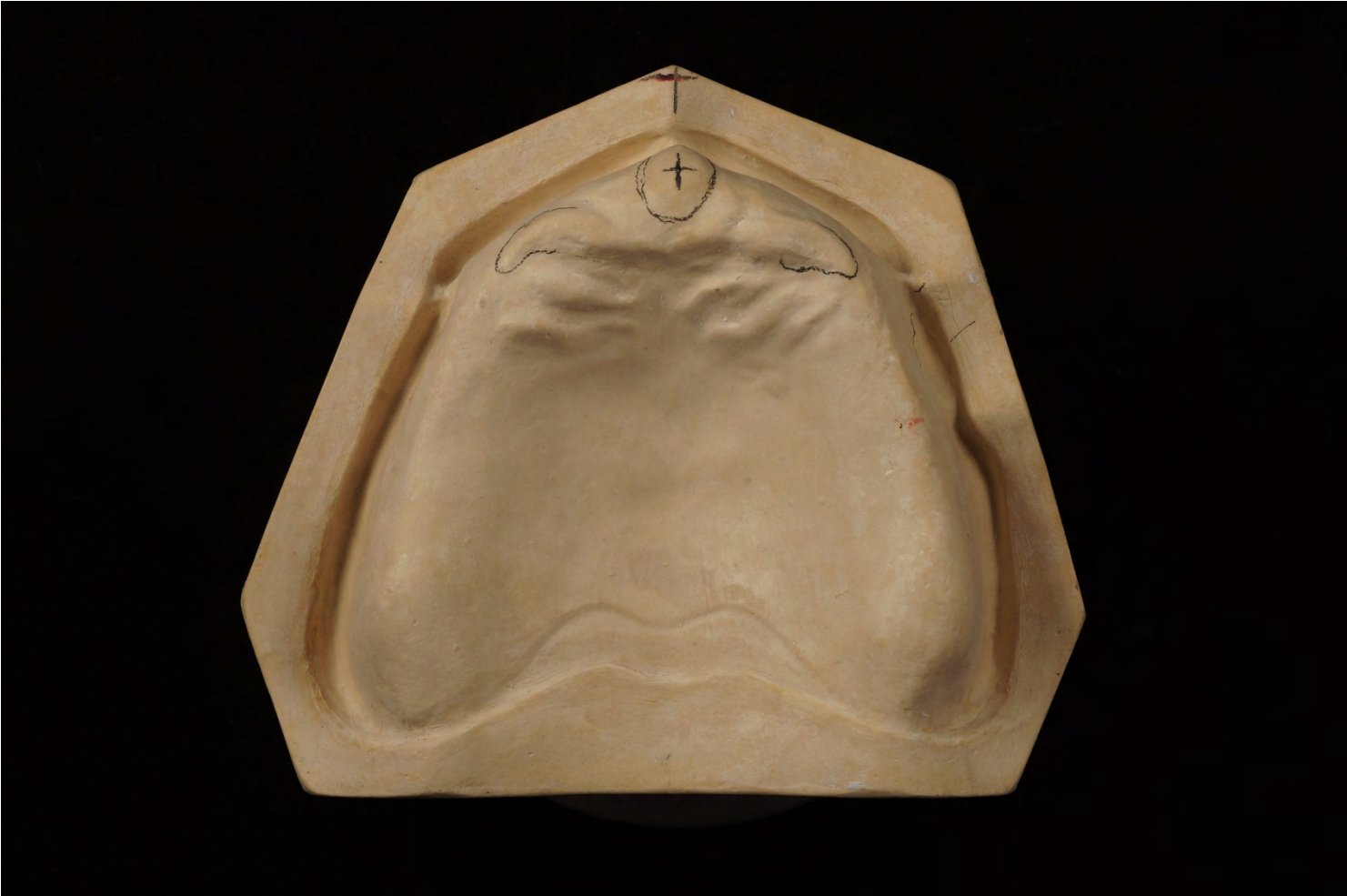
Model analysis



Model analysis



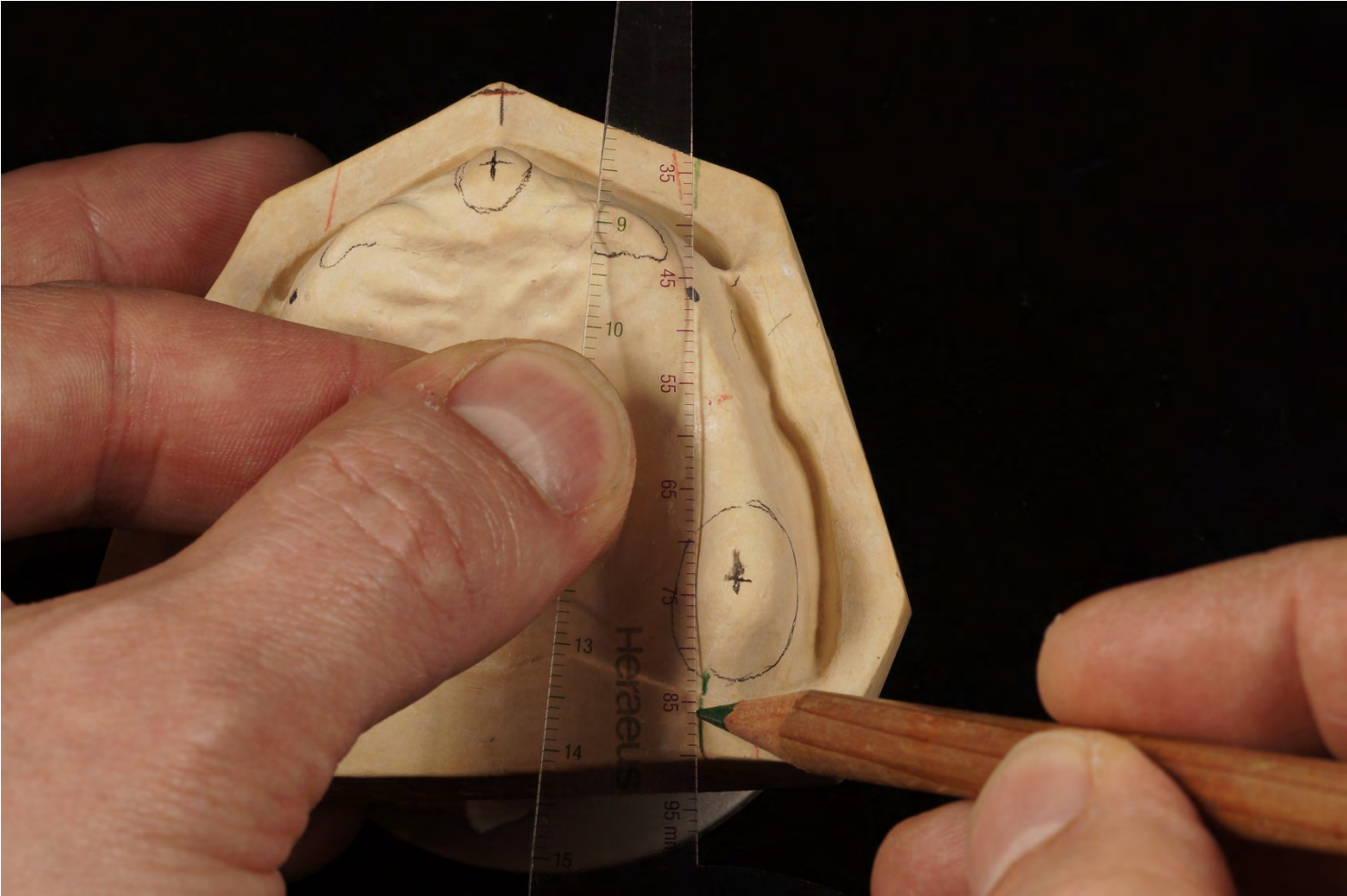
Model analysis



Model analysis



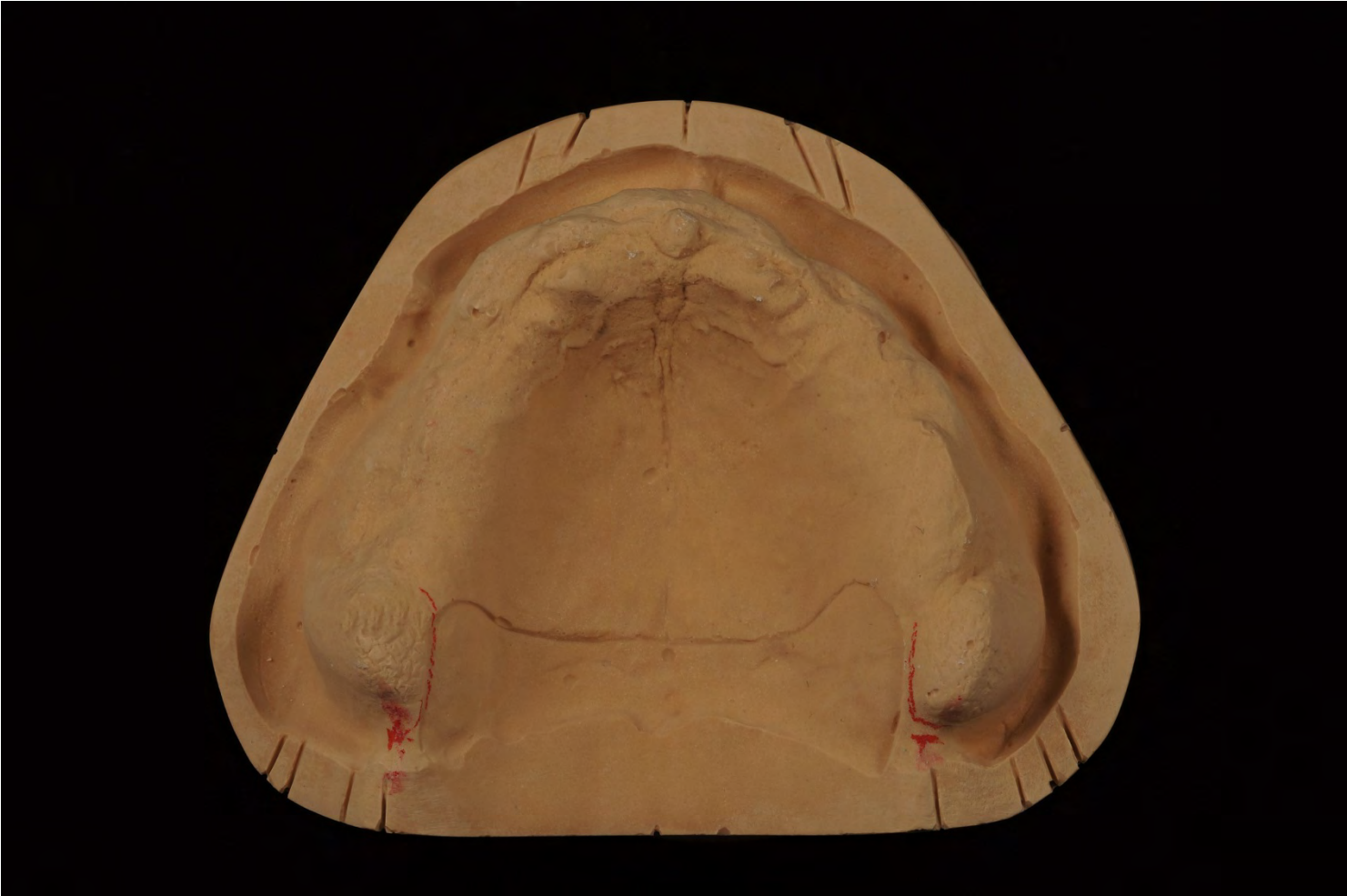
Model analysis



Model analysis



Model analysis



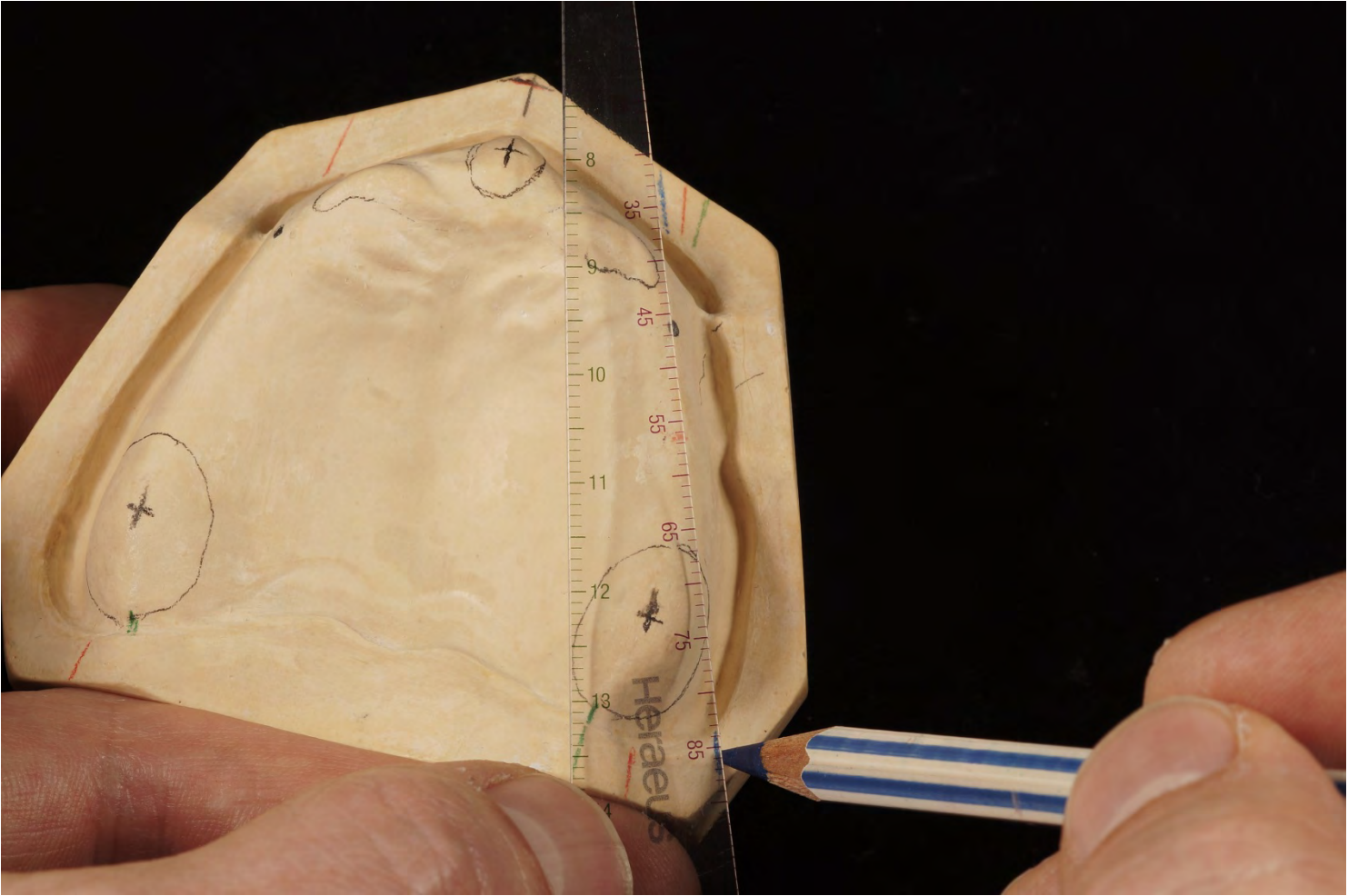
Model analysis



Model analysis



Model analysis



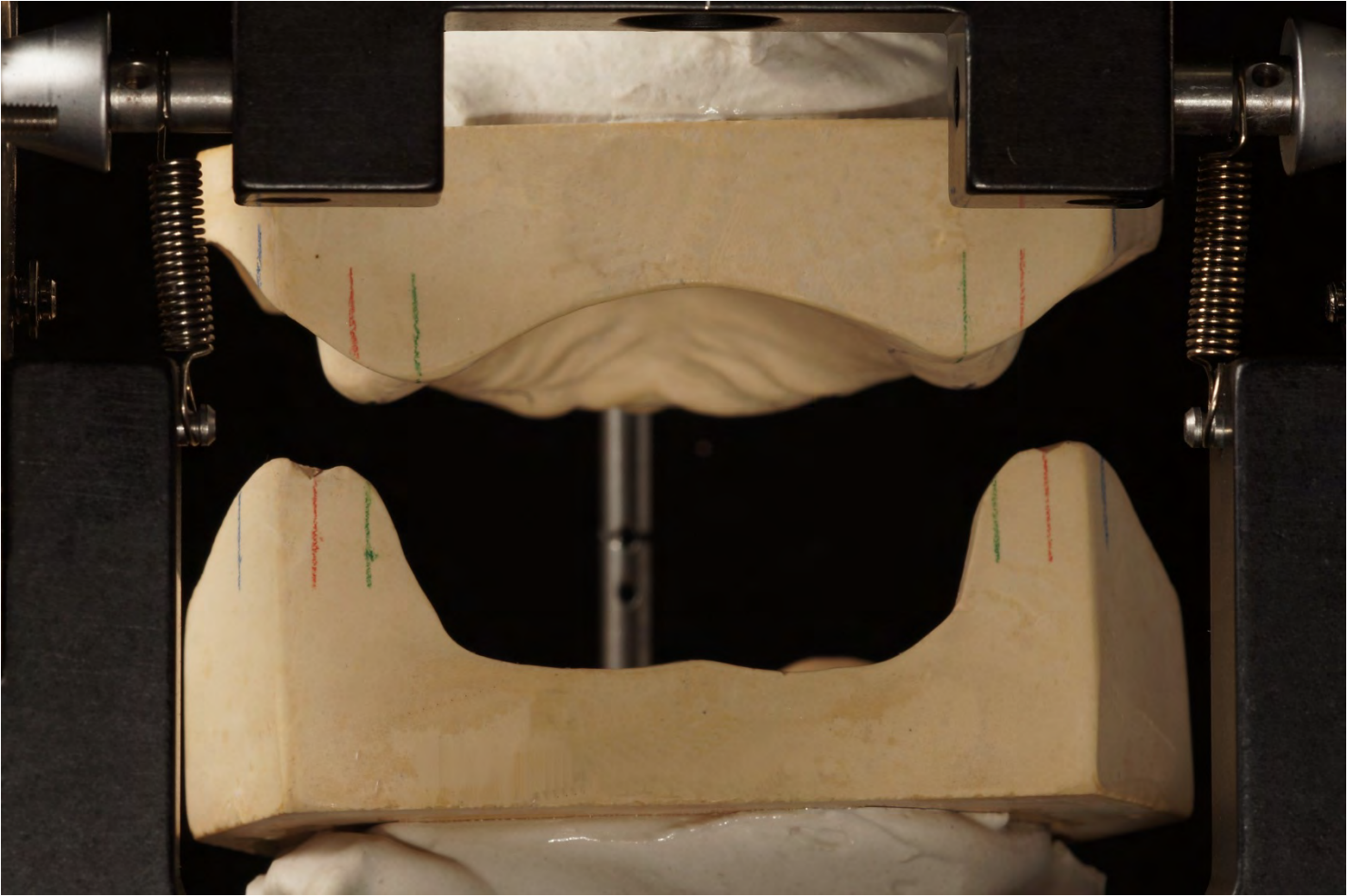
Model analysis



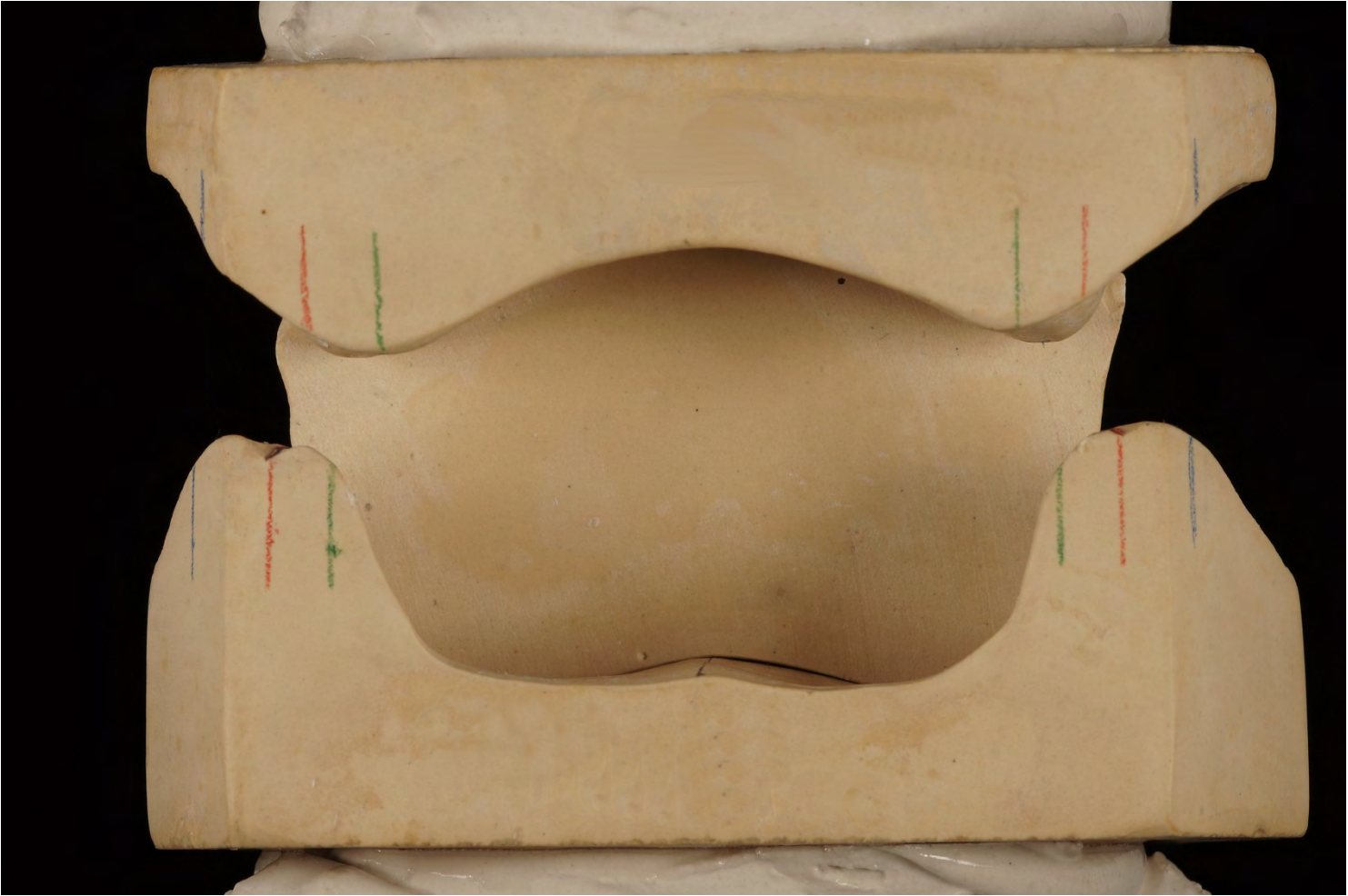
Model analysis



Model analysis



Model analysis



Model analysis



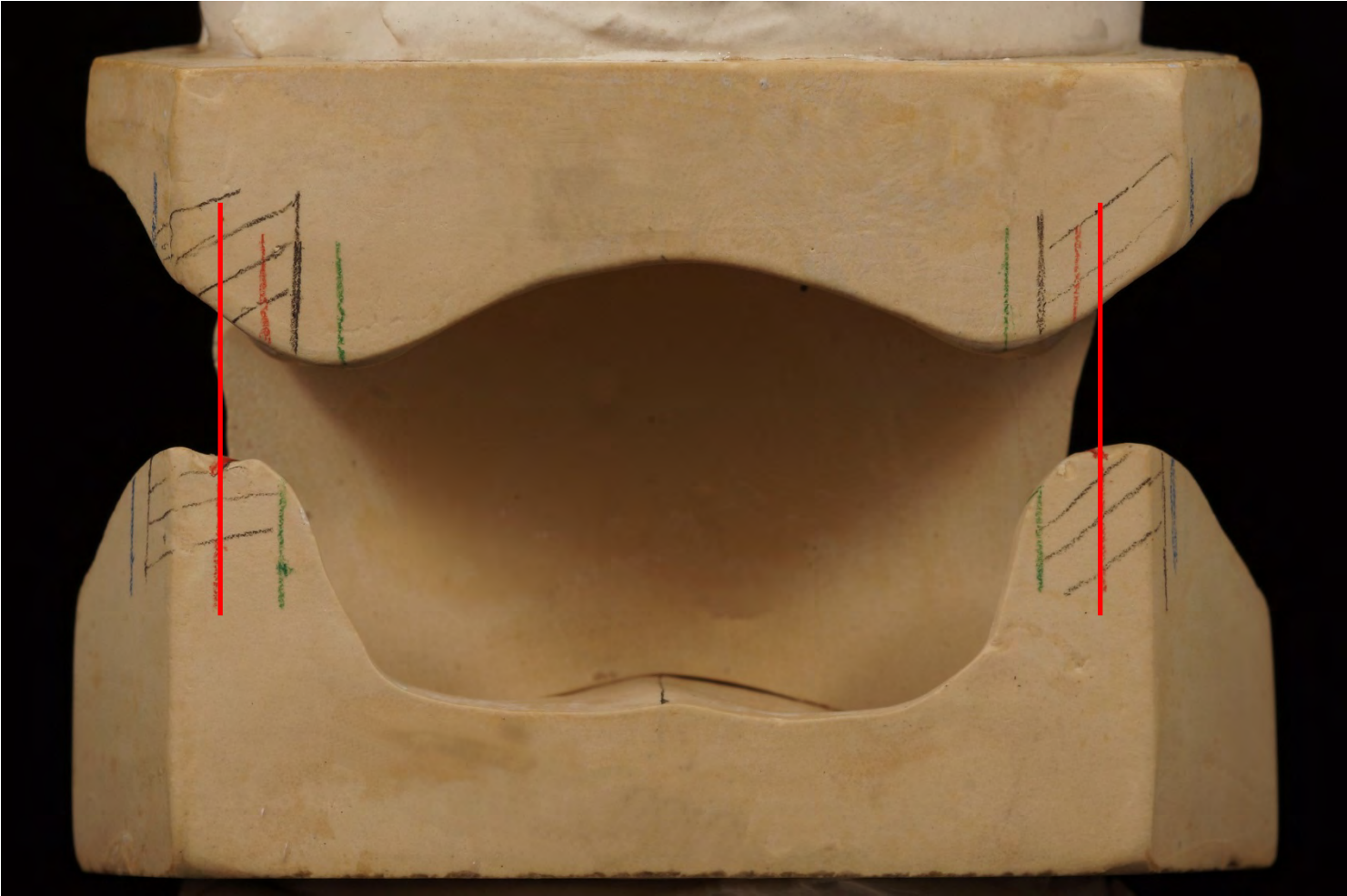
Model analysis



Model analysis



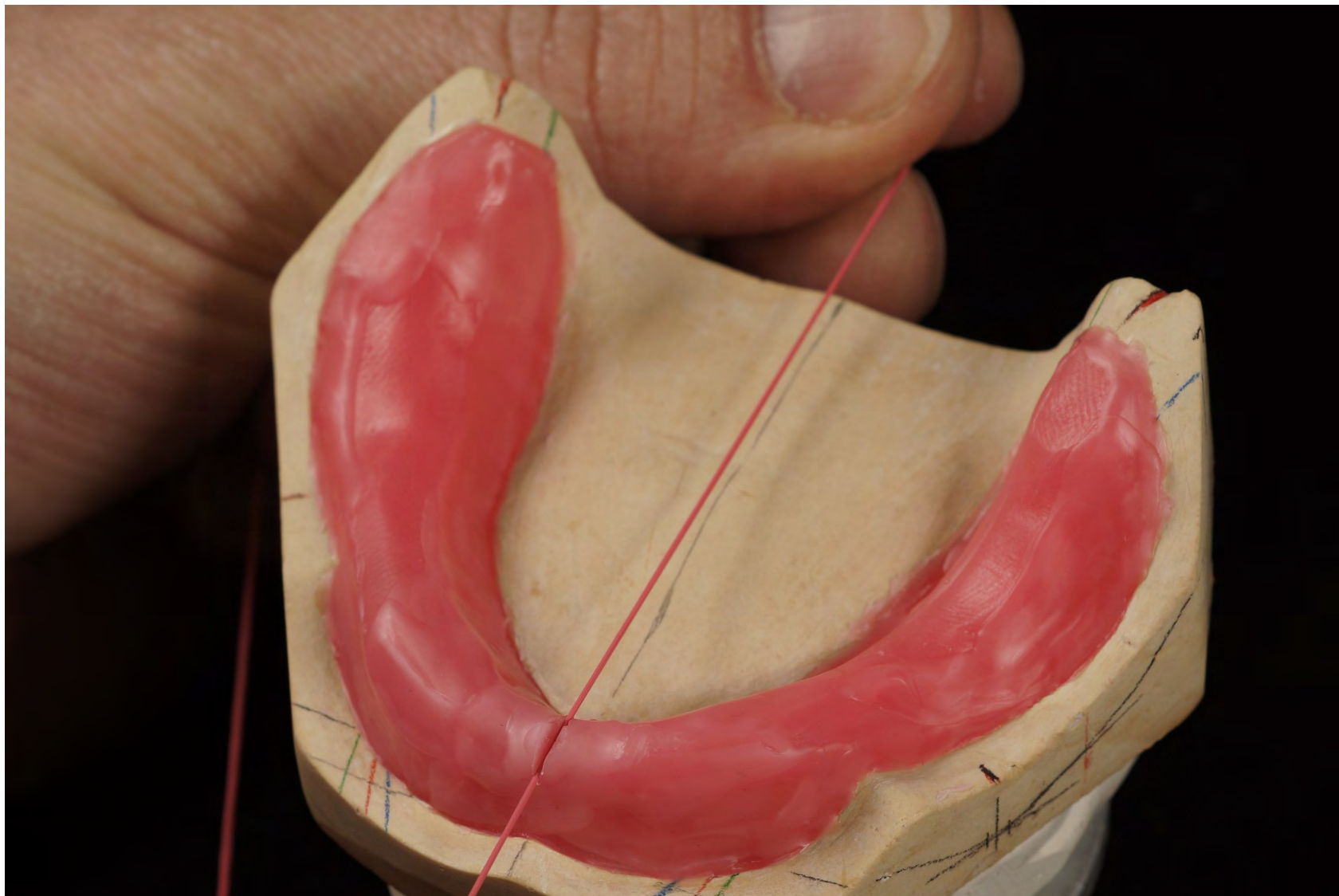
Model analysis: Joint loading field – hatched with pencil



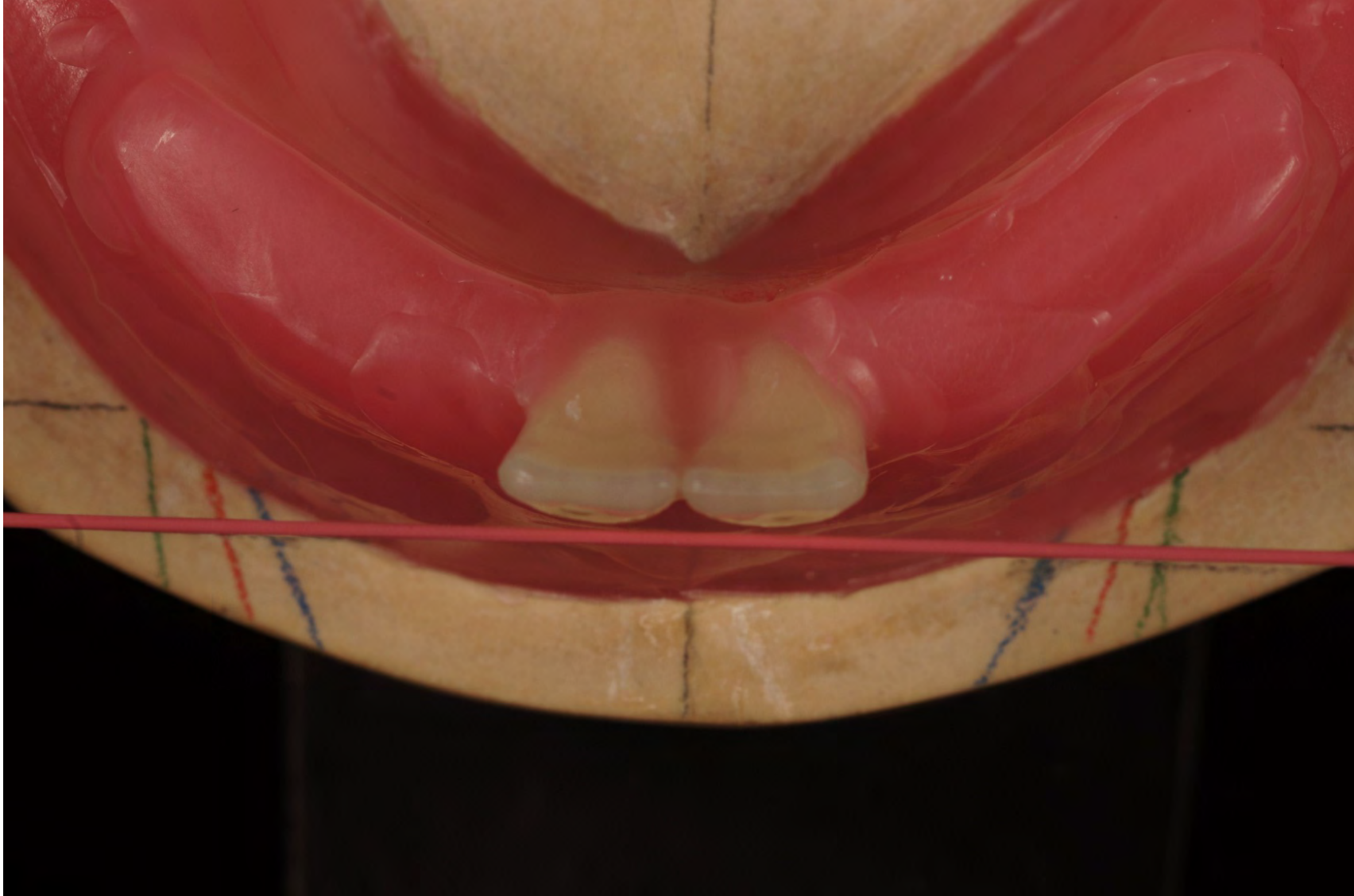
Setup according TiF®



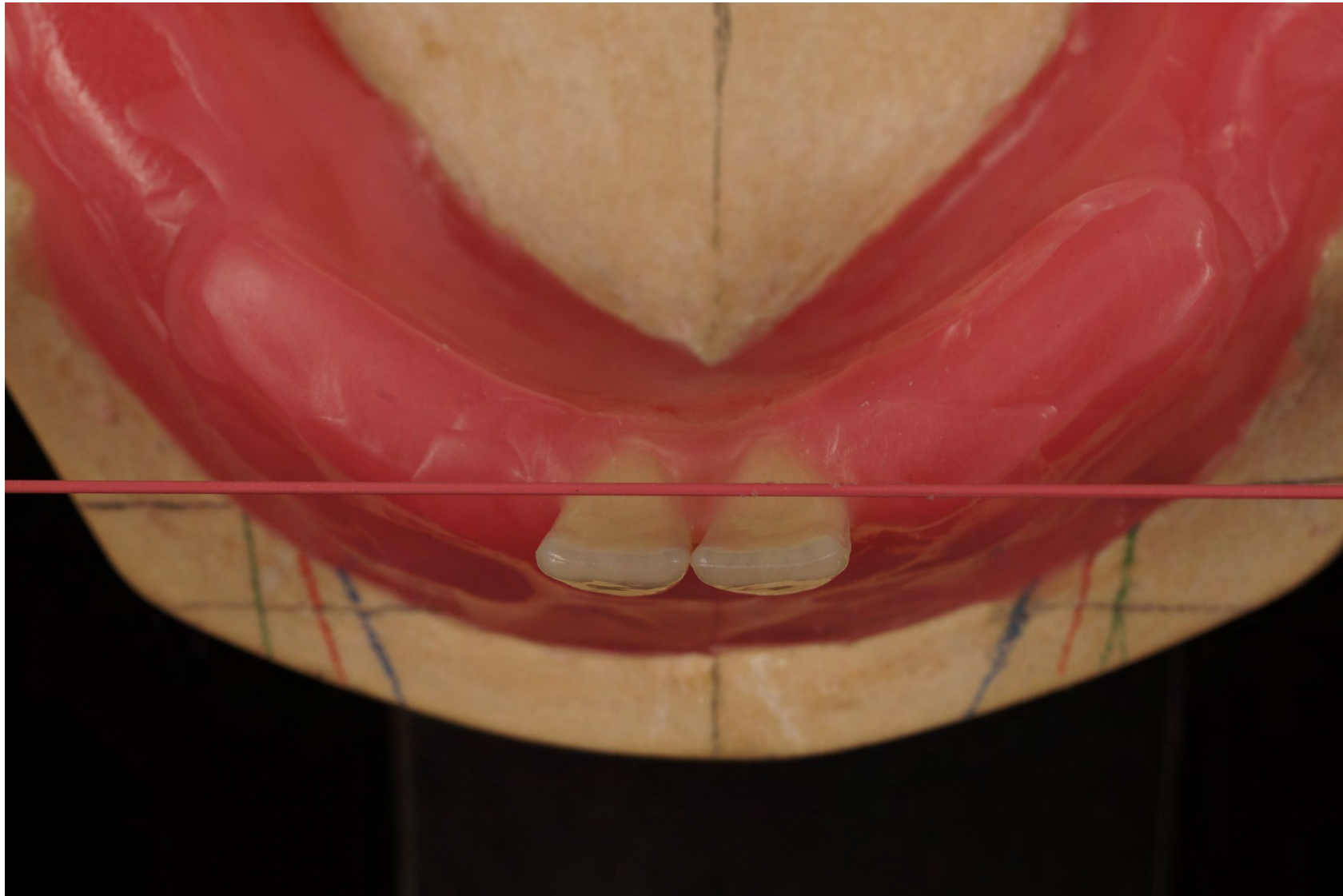
Setup according TiF®

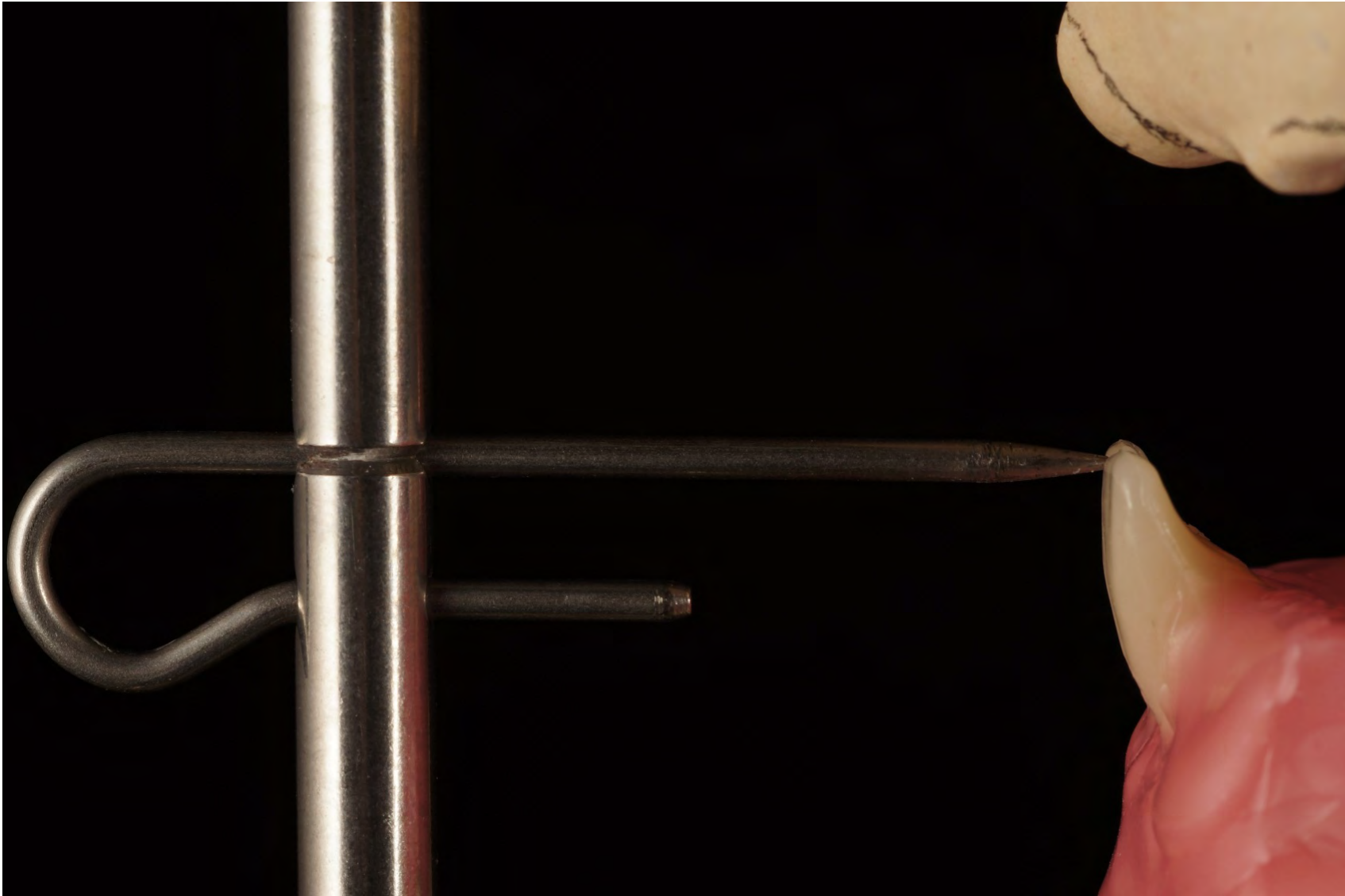


Setup according TiF®

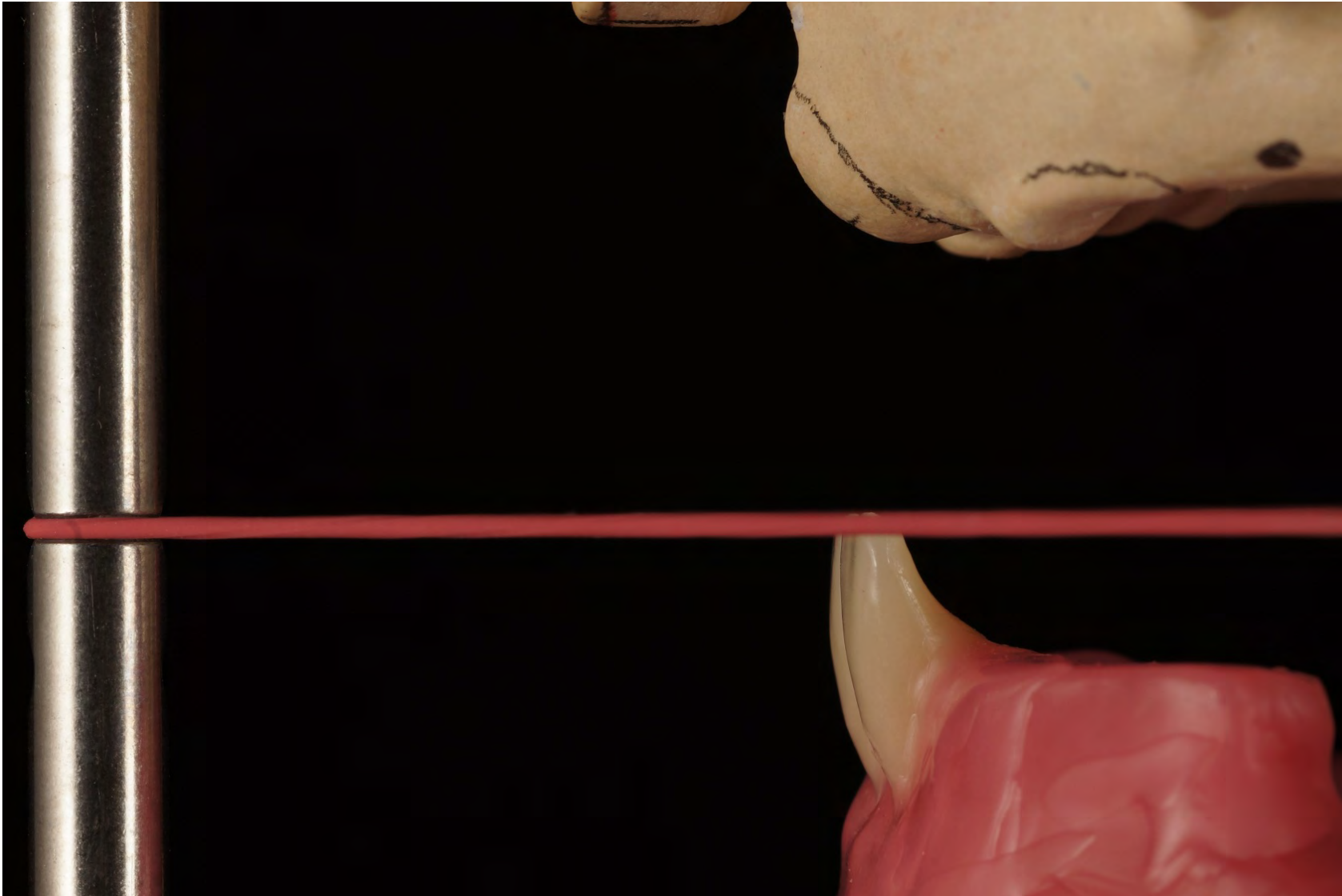


Setup according TiF®

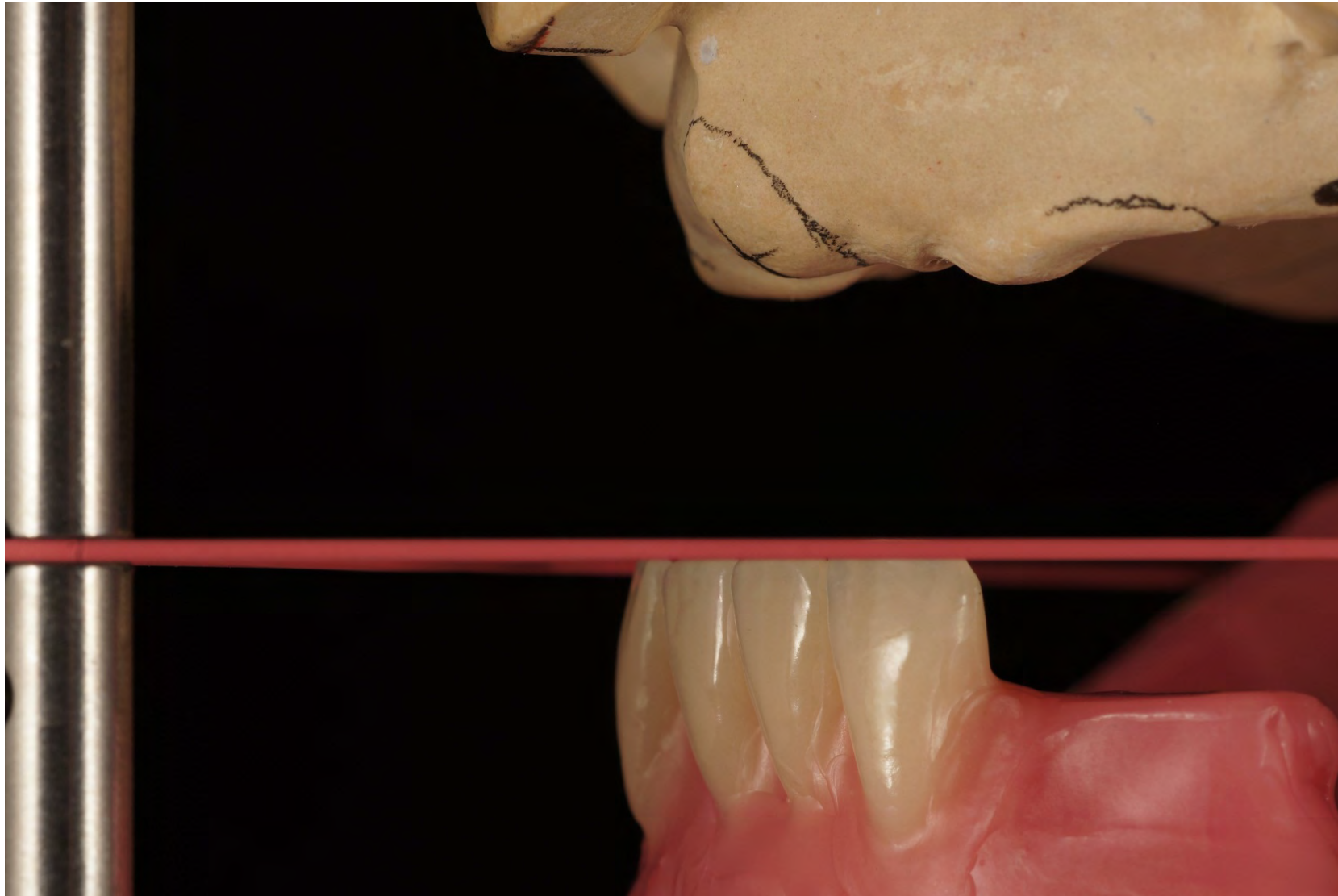




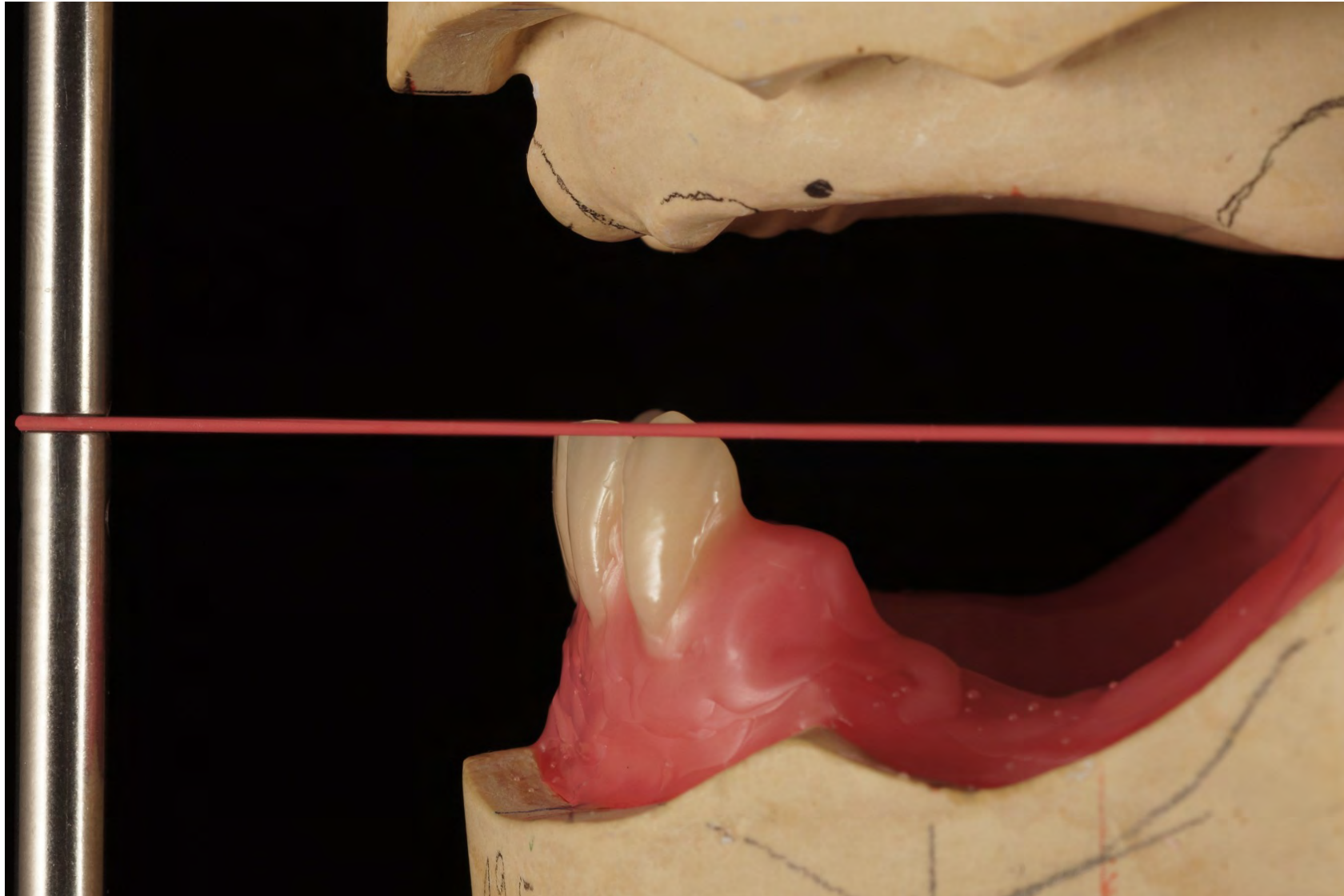
Setup according TiF®



Setup according TiF®



Setup according TiF®



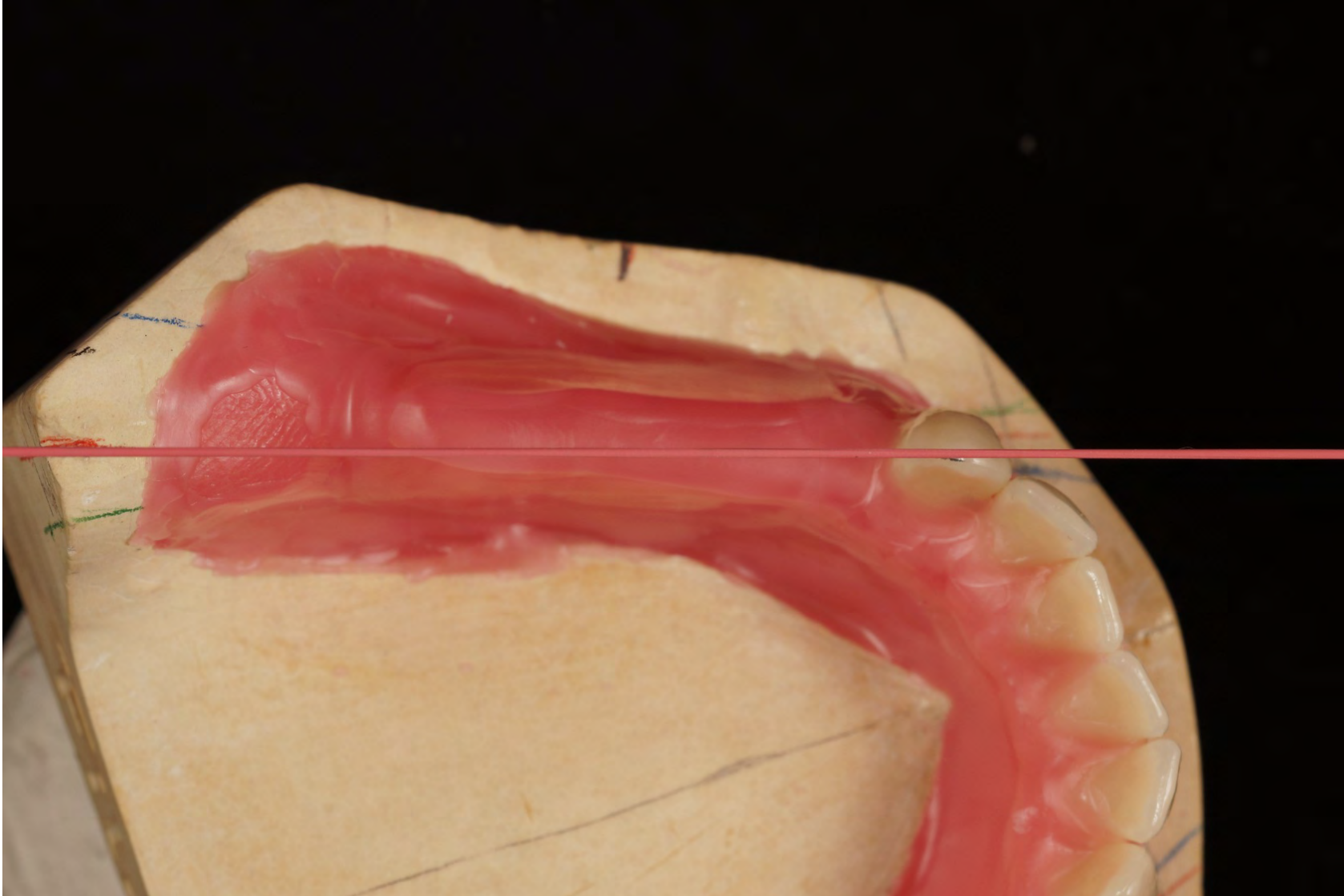
Setup according TiF®



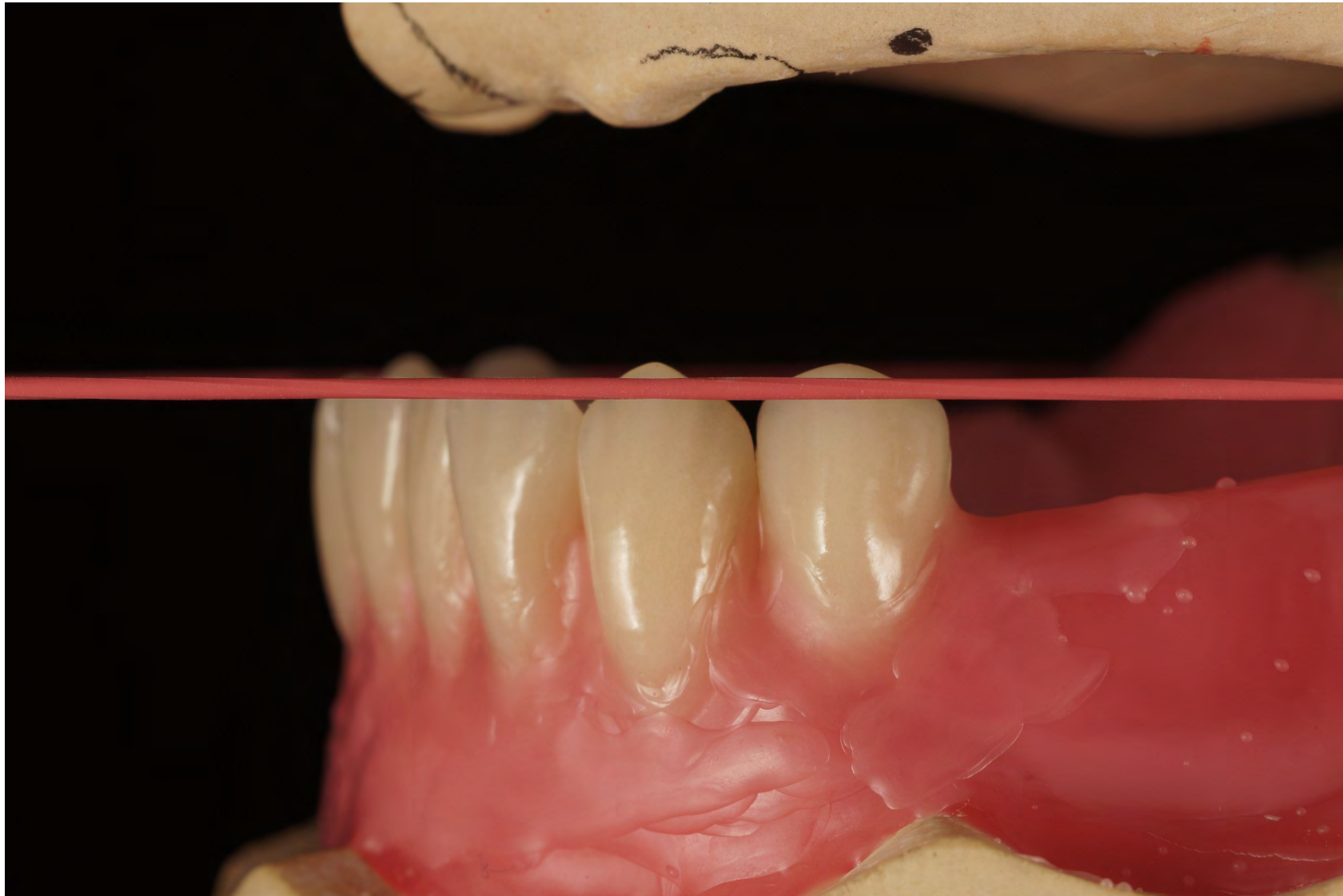
Setup according TiF®



Setup according TiF®



Setup according TiF®



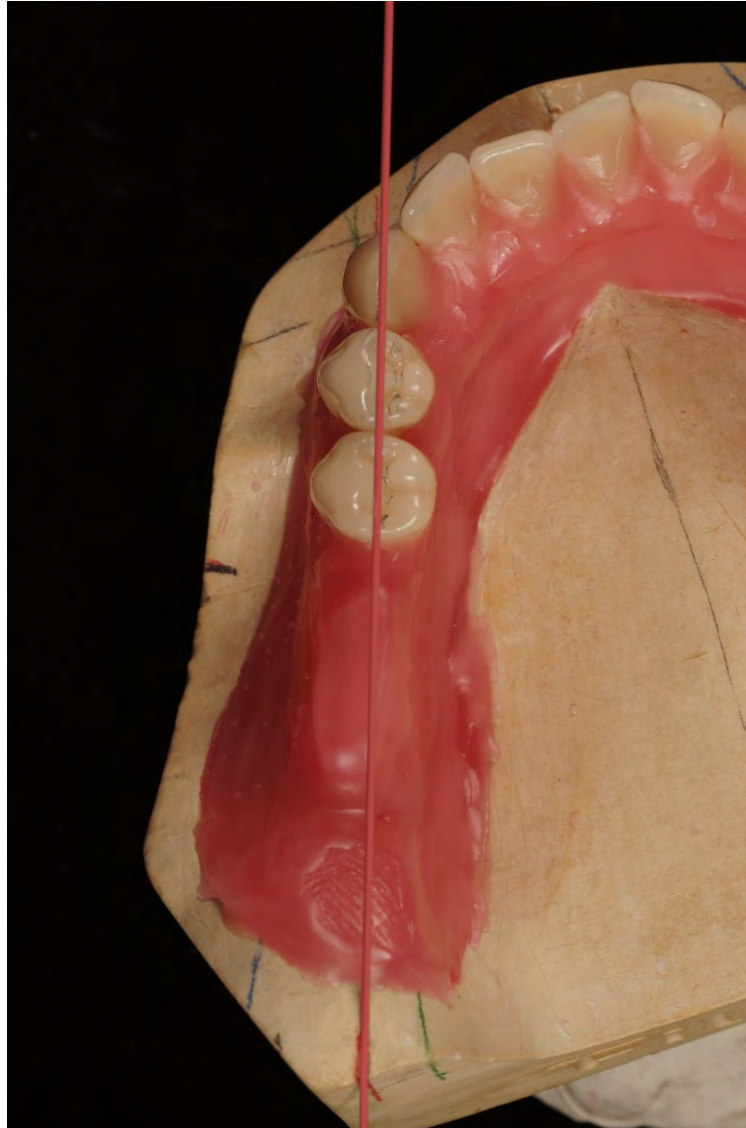
Setup according TiF®



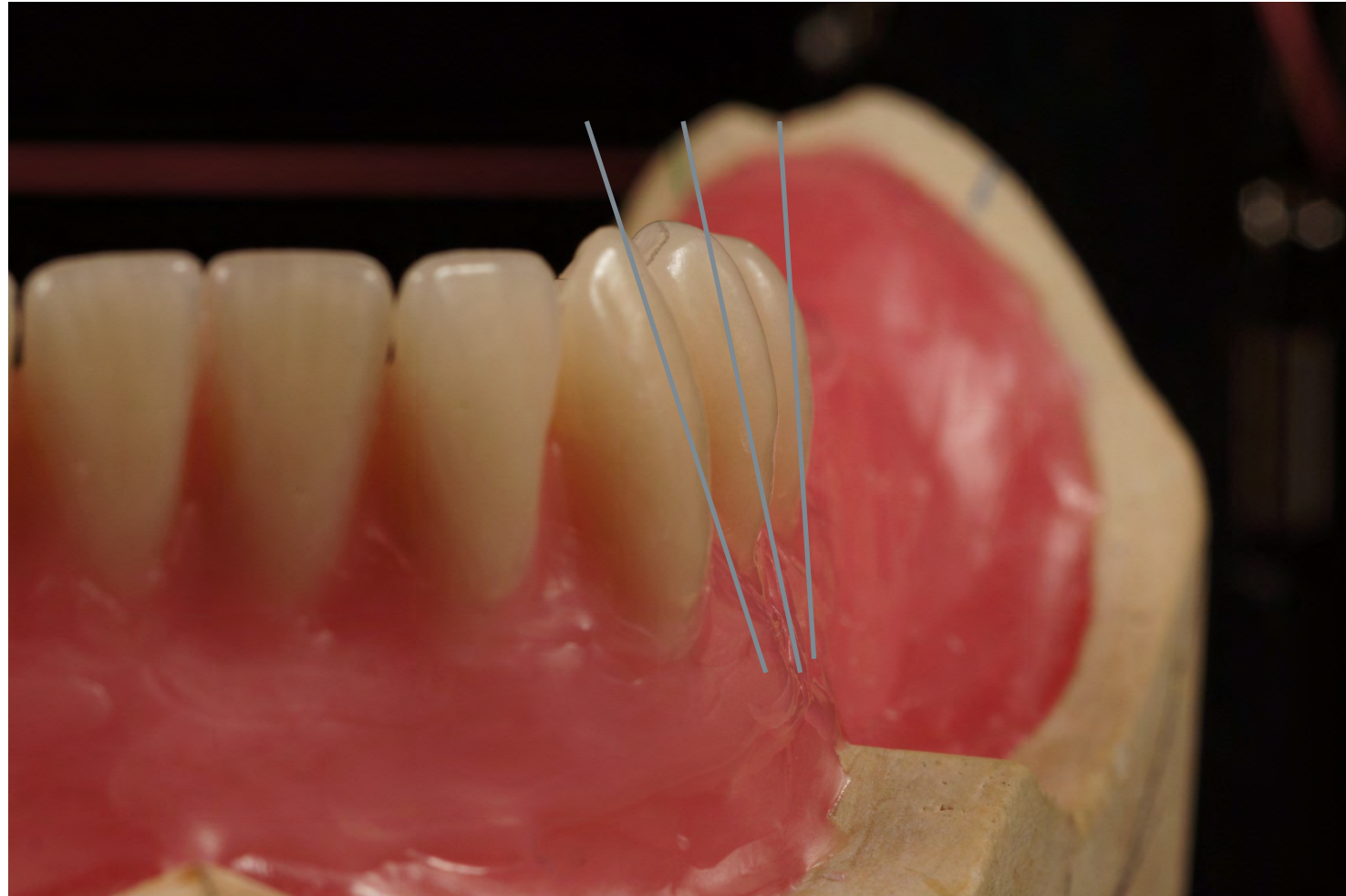
Setup according TiF®



Setup according TiF®



Setup according TiF®



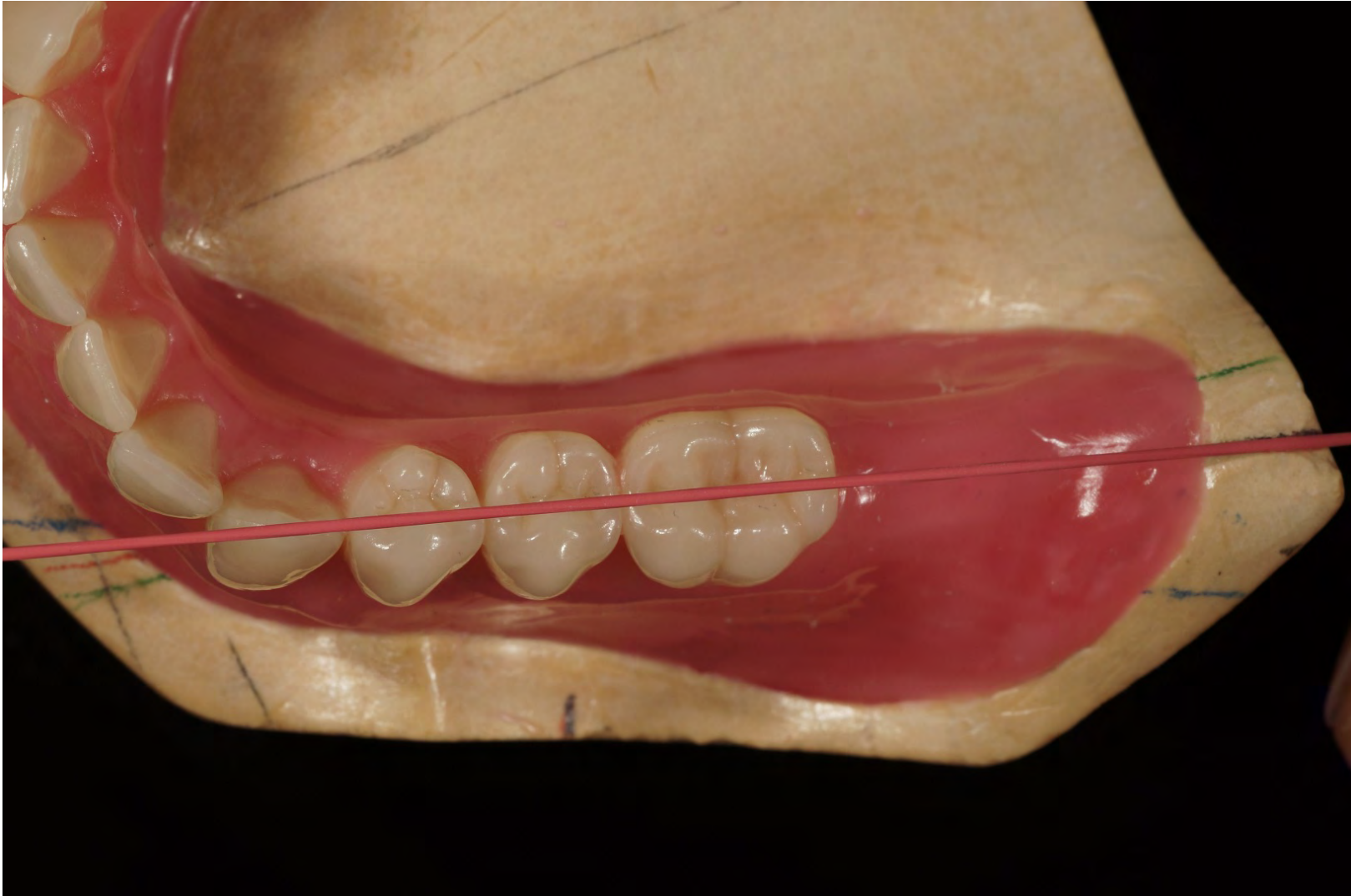
Setup according TiF®



Setup according TiF®



Setup according TiF®



Setup according TiF®



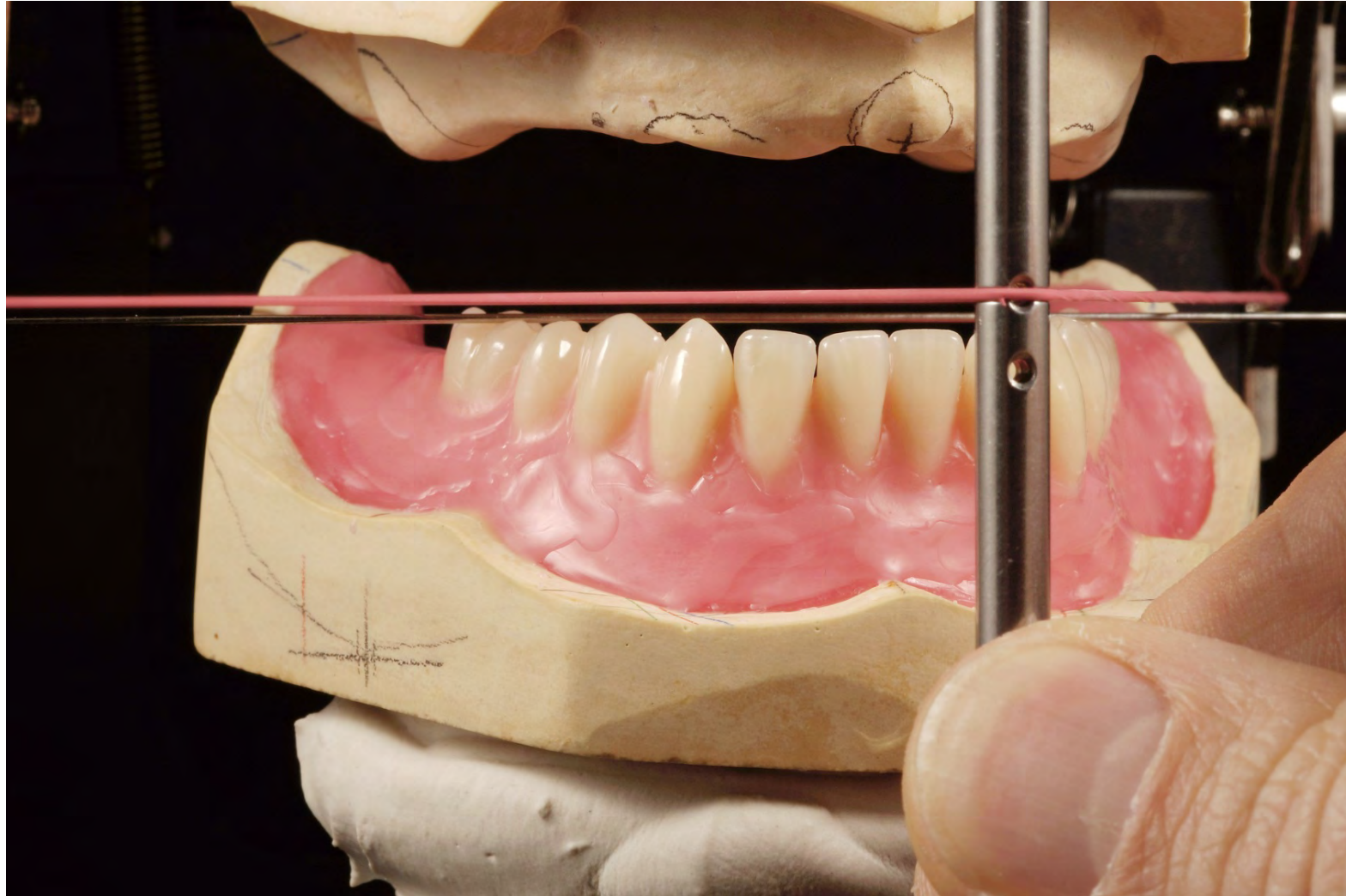
Setup according TiF®



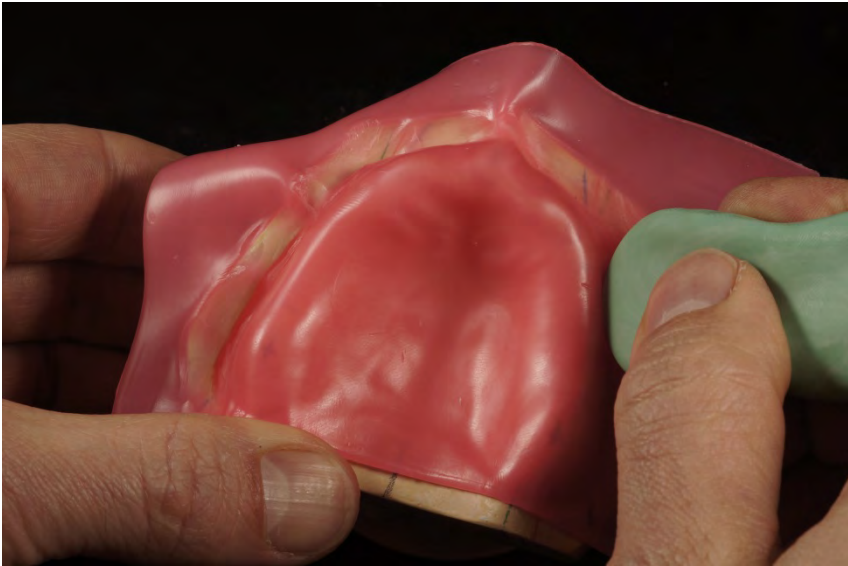
Setup according TiF®



Setup according TiF®



Setup according TiF®



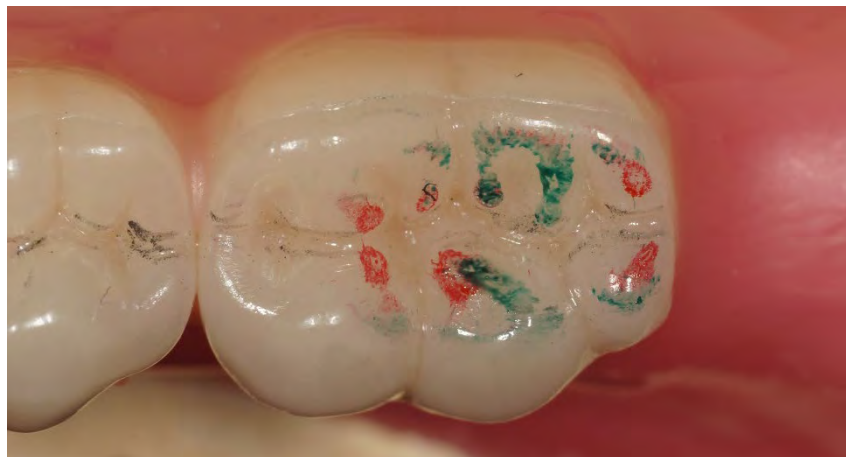
Setup according TiF®



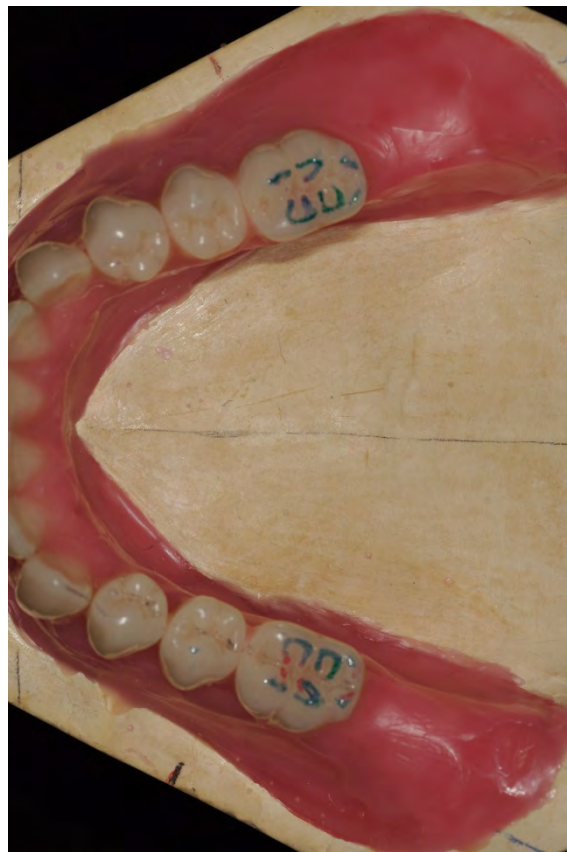
Setup according TiF®



Setup according TiF®



Setup according TiF®



Setup according TiF®



Setup according TiF®



Setup according TiF®



Setup according TiF®



Setup according TiF®



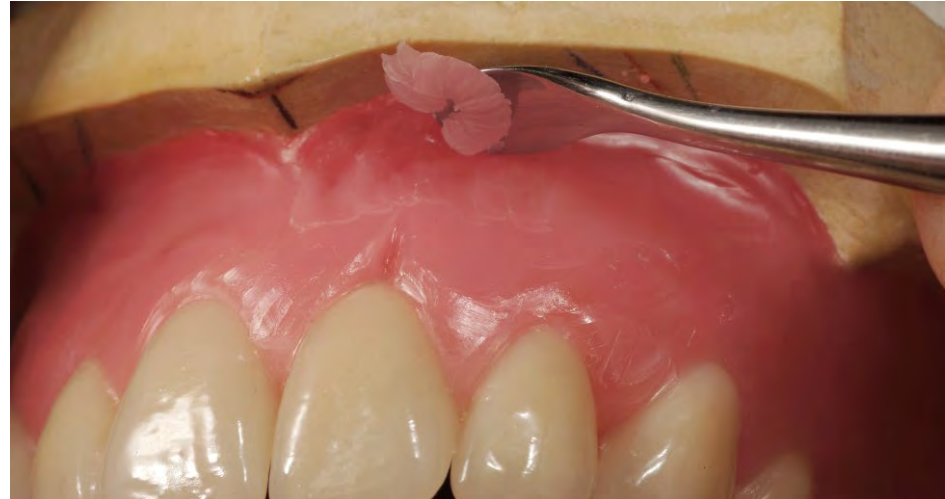
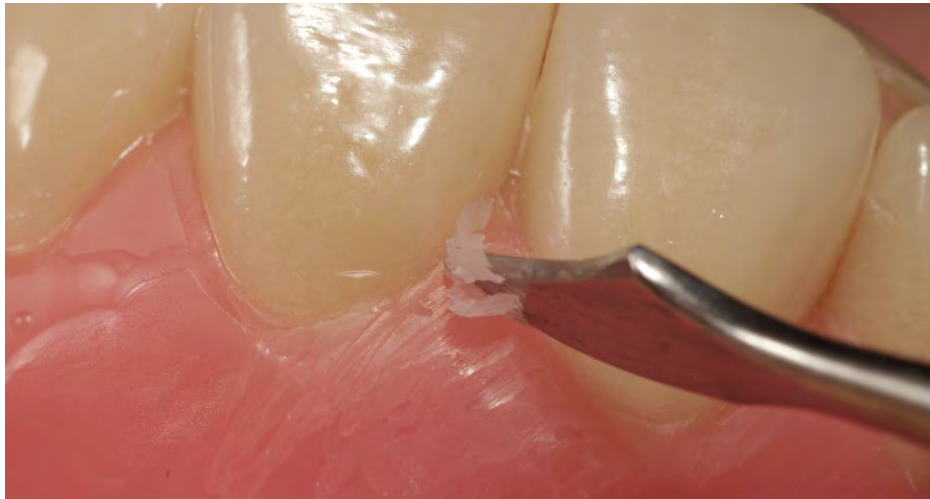
Setup according TiF® - grinding of lateral movement



Setup according TiF®



Setup according TiF®



Setup according TiF®



Setup according TiF® in tooth-to-tooth-relationship comparable to Gerber



Setup according TiF®

