

PALA Characterisation and Tooth Coloured Clasps

Jason Gallagher BDM - Prosthetics AUS/NZ

Giving a hand to oral health.



KULZER
MITSUI CHEMICALS GROUP

Agenda

- » What is Pala Cre-active?
- » Vital Components of the System
- » Creating a Basic Staining Template
- » The 80 / 20 Rule
- » Step-by-Step
- » Step-by-Step – Video
- » Tooth Coloured Clasps
- » Step-by-Step
- » Can Other Branded Lights Cure the Material?

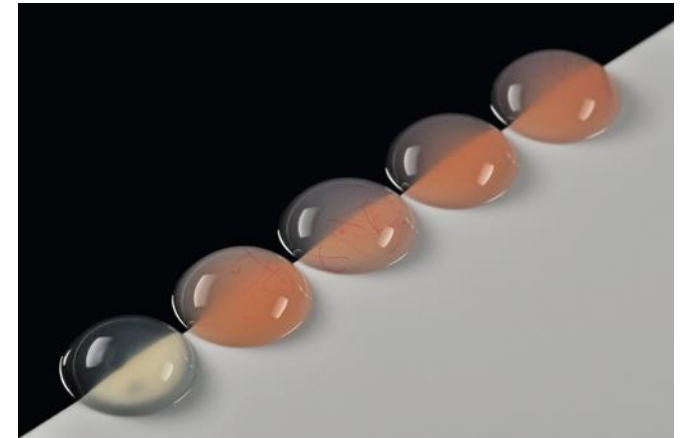
What is Pala Cre-active?

- » Pala Cre-active is our light-curing colourfluid system for individual Characterisation of the denture base



What is Pala Cre-active?

- » It was developed from the combination of two systems:
- » The Artglass colourfluids
- » Versyo.com light cured resins



What is Pala Cre-active?

- » The kit has:
- » 5 Gingiva Colours (4 Pink shades and 1 clear), these are the only colours that can be light cured.
- » 6 Colour fluids, These colours must be mixed or covered with the Gingiva colours.



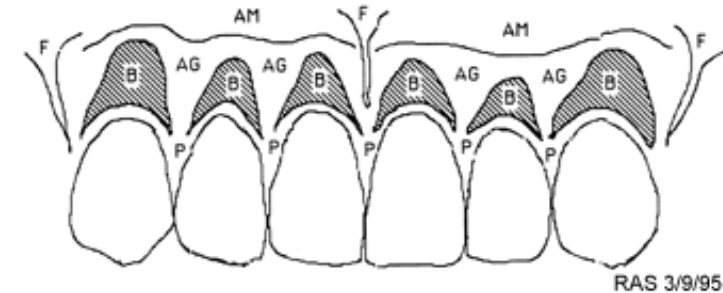
Vital Components

- » Two Other components need to make the system work and these are essential:
- » Used in conjunction with Signum Connector which is the bonding agent that allows the resin to bond to either Heat or Cold Cure Acrylic.
- » The Hilite Power Light Curing Box (Hilite Power 3D)



Creating a Basic Staining Plan/Template

» Staining dentures creates contrast and depth, but spending too much time creating your work of art may reduce the practical value to your business. Having a basic staining technique with strong colours you can spend 20 minutes on a denture adding value to your product by creating a natural aesthetic result.



AG = Attached Gingiva (Shade Light Reddish Pink)

Gingiva R50 + RED

AM = Alveolar Mucosa (Shade Darker Red)

Gingiva Shade 200 + RED/POLAR

B = Blanching areas over roots (Shade Pale Pink)

Gingiva Light Pink + WHITE

F = Frenum Attachments (Shade Pale Pink)

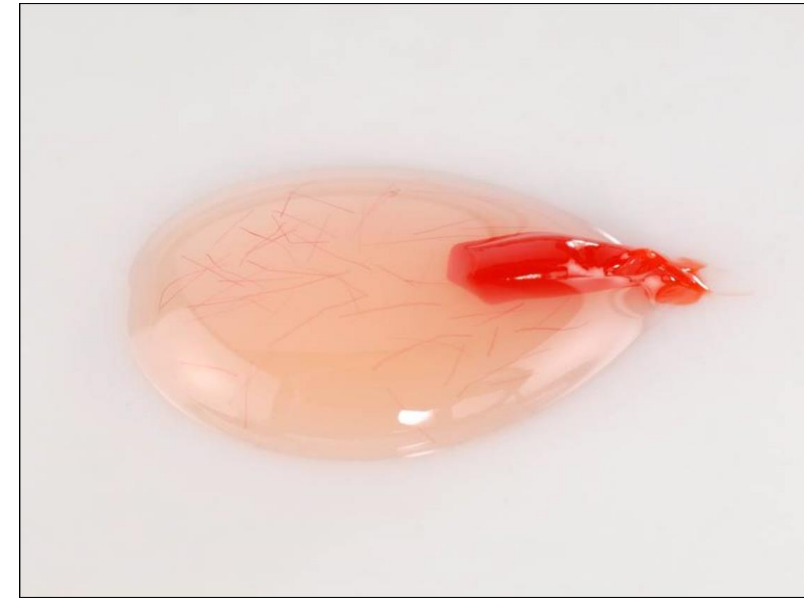
Gingiva Light Pink + WHITE

P = Papillae (Shade Light Reddish Pink)

Gingiva R50 + RED

The 80 / 20 Mixing Rule

»The Colourfluids **DO NOT LIGHT CURE**, if they are used it is best to mix with the Gingiva shades but remember the **80/20** rule!



Step-by-Step

»**Step 1:** Dentures after processing and grinding.



»**Step 2:** Sandblast the area to be stained with 110µm aluminium oxide.



Step-by-Step

»Step 3: The denture after sandblasting.



»Step 4: Paint the Signum connector fluid on the surfaces to be stained. This is the secret behind the system and should be applied with care. This creates the bond between the stain and denture.



Step-by-Step

» **Step 5:** Seal the gingival area with the clear fluid.



» **Step 6:** On the gingival area apply the light pink fluid as a base to carry your stains.



Step-by-Step

» **Step 7:** Add pink colour to create contrast and depth.



» **Step 8:** White stain is added to the gingival roll for a natural look and an increase in contrast. Dark and light colours should be blended carefully to avoid harsh colour transitions.



Step-by-Step

» **Step 9:** Basic staining with only four colours creates a dramatic difference.



» **Step 10:** Cover with Signum Insulating Gel then light cure your stained denture in the Hilight Power Unit for 180 seconds. This removes the smear layer.



Step-by-Step

» **Step 11:** Polish like normal. The stained area polishes flush with the acrylic and leaves no junction line.



» **Step 12:** With very little material and time the value of the denture has been greatly increased. Not only in monetary terms, but also aesthetically for the client.

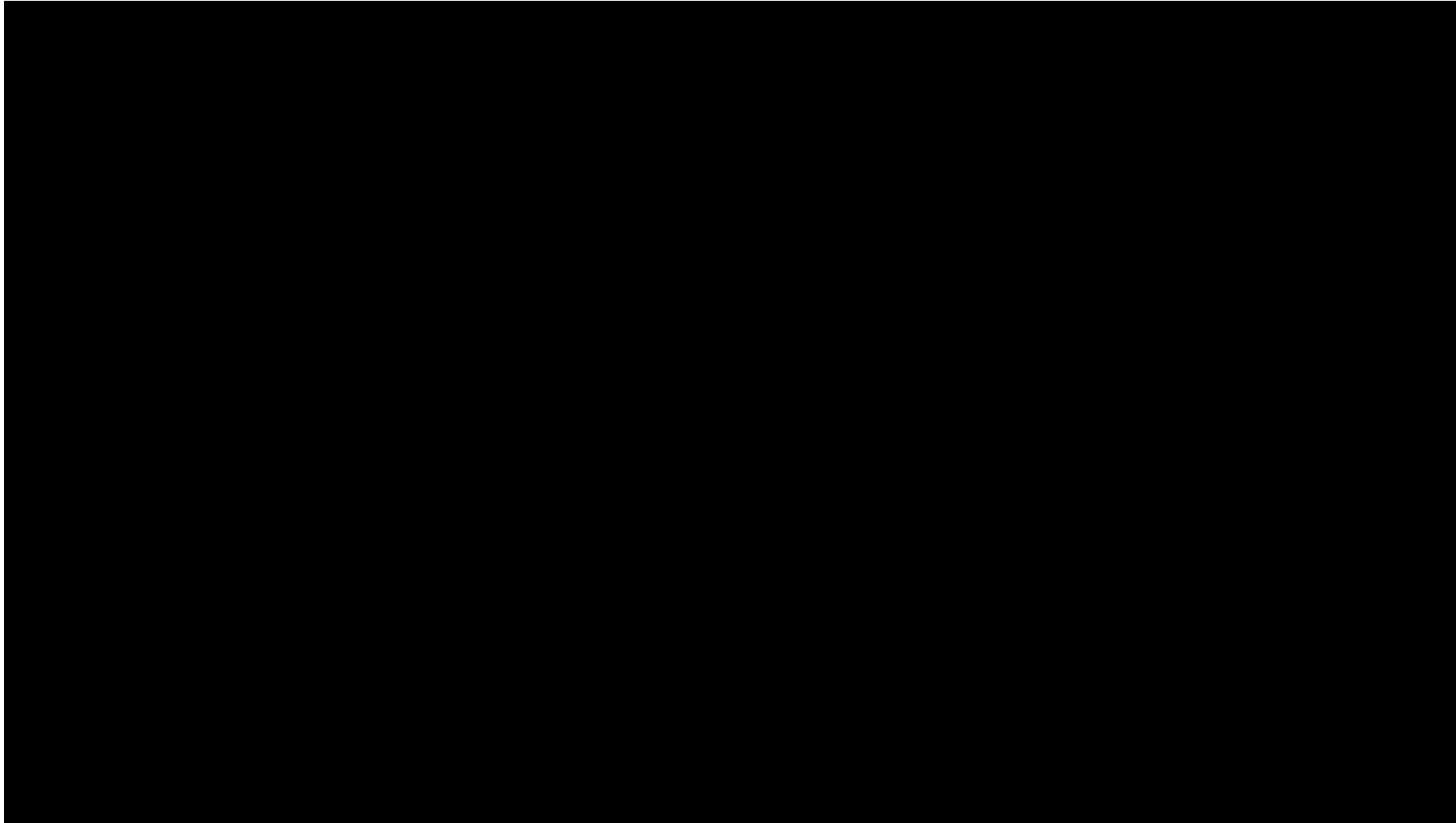


The Finished Article

- » Now Placed in the mouth, the staining was done with strong colours which when placed in the mouth softens, improving the aesthetics.



Step-by-Step - Video



Tooth Coloured Clasps

Vital Components of Tooth Coloured Clasps

- » Kulzer has a bonding system for composite and acrylic bonded to Signum Metal Bond. Whilst it is designed primarily to bond whole tooth structures of composite and acrylic to alloy a few interesting applications have evolved from its origin.
- » One such application is to disguise clasps on metal frameworks with composite. The application is limited to small clasps, which have little flexibility.
- » The Hilite Power Light Curing Box (Hilite Power 3D)



Step-by-Step

- » **Step 1:** A denture is waxed up as normal and processed as you require either by pouring or conventional flask and pack.
- » **Step 2:** The denture is finished up to the polishing stage. This system also allows for existing dentures to be retro finished with these claps. A tip is to ensure that the denture and the area where you are working is very clean



Step-by-Step

- » **Step 3:** The denture is now sandblasted in the clasp area with clean non-recycled 250-micron aluminium oxide. Any oxide residues can be blown off with clean oil free air or with distilled water. It is critical not to steam clean the area.
- » **Step 4:** The denture is now ready for the Signum bond, Signum bond comes in to parts bond 1 and bond 2. Bond 1 is applied to the sandblasted area and allowed to air dry then bond 2 an opaque looking material is applied. The denture is now light cured in the Heraflash for 90 seconds.

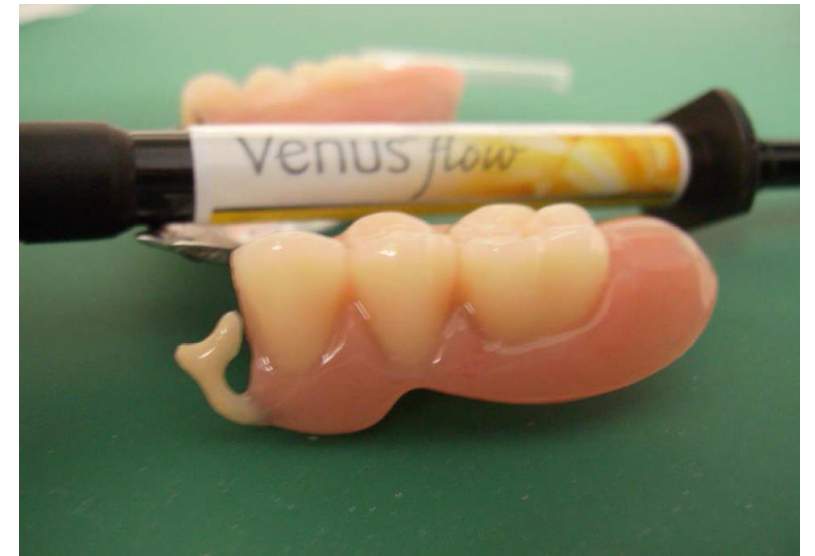


Step-by-Step

» **Step 5:** After 90 seconds of light curing the denture is now ready for you to apply the composite directly onto the clasp. It is as simple as painting the composite onto the clasp with a 0 brush. Once you have covered the clasp it is cured for 90 seconds again.

Venus flow from Kulzer is recommended it comes in various shades and is fully compatible with Signum bond.

» **Step 6:** When the denture is cured all that remains is to high shine using your current method. Some notes to remember **not all clasps application are suitable for this method so take care to select small clasps.** Always keep this type of work clean and **don't be tempted to use smaller micron aluminium oxide.**



Before and After



- » The finished product is pretty good with a very acceptable blend into the natural teeth.
- » With the advantage of metal support this system has a much more functional advantage, the cast metal framework continues to function as if the clasps were metal.

Can Other Lights Cure Pala Cre-active?

	Max Thickness	Heraflash / UniXS / DentacolorXS	Unilux AC	Spectramat	Triad 2000	Solidilite EX	Targis
		SECONDS	CYCLES	MINUTES	MINUTES	MINUTES	MINUTES
Retention Flow	0.4	90	15	5	6	7	
Opaque	0.08	90	15	5	6	5	
Margin	2	90	5	2	2	7	
Dentine	2	90	15	5	6	7	
Enamel	2	90	5	5	2	7	
Effect	1	90	15	5	2	7	
Incisal	1	90	15	5	6	7	
Transpa	1	90	15	5	6	7	
Gingiva	2	90	15	5	6	7	
Creactive	2	90	15	5	6	7	25
Connector		90	5	2	2	5	6
Final Cure		180	25	10	20	9	
Signum Bond II	Thin	90	15	5	6	7	6
Signum Bond I	0	0	0	0	0	0	0