



Pala cre-active®
For natural-looking dentures.

Giving a hand to oral health.



KULZER
MITSUI CHEMICALS GROUP

Pala cre-active
Step-by-Step Guide



Step 1

Roughen the denture surface with a coarse diamond bur or by sandblasting (50µm) and clean.
Note: Only roughen the tooth surface at points that are to be individualised.



Step 2

Apply Signum connector with the brush, allow to act for 2–3 minutes and cure for 90 seconds with the HiLite Power 3D unit (or former Kulzer flash curing devices).



Preparation

Colour characterisation

0 min

5 min

10 min

* Recommended time for the customisation of anterior upper and lower jaw in minutes.

For natural-looking gum areas.



Step 3

Contour the alveoli with R50 gingiva.

Note: Do not apply Pala cre-active on the tooth.



Step 4

Apply pink colour fluid interdentally and pre-cure with the HiLite pre 2-gelling unit for 5–10 seconds, until the surface is getting stiff.

Note: Mix the color fluids with the gingiva materials to obtain a natural and transparent depth effect.

Shaping

Finishing

Rework

min

20 min

25 min

30 min*



Pala cre-active
Step-by-Step Guide



Step 5
Apply polar colour alternating between the alveoli.



Step 6
Apply red colour fluid irregularly and pre-cure with the HiLite pre 2-gelling unit.

Note: The viscosity of the gingiva materials and color fluids can be adjusted and their miscibility improved with small quantities of Palaseal.



Preparation		Colour characterisation	
0 min	5 min	10 min	15
* Recommended time for the customisation of anterior upper and lower jaw in minutes.			

For natural-looking gum areas.



Step 7

Continue building up the alveoli with shade 200 gingiva.



Step 8

Now complete the contour alternating with light pink gingiva and the pink colour fluid.

To obtain top results: Only apply a thin coat of Palaseal on blasted surfaces conditioned with Signum connector.

Shaping

Finishing

Rework

min

20 min

25 min

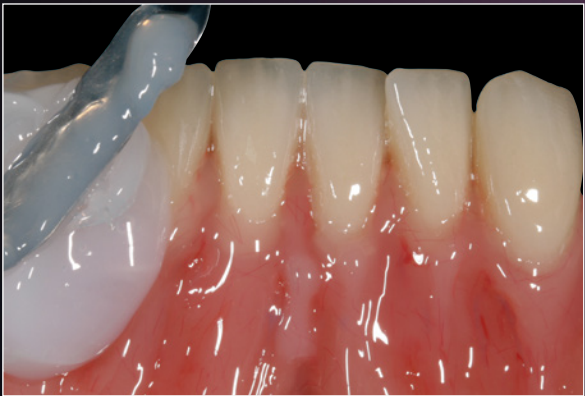
30 min*



Pala cre-active
Step-by-Step Guide



Step 9
Apply very fine structures with R50 gingiva and pre-cure with the HiLite pre 2-polymerisation unit for 5–10 seconds, until the surface is getting stiff.



Step 10
Apply Signum Insulating Gel 5 mm thick using an instrument and finally cure for 180 seconds (e.g. HiLite power 3D).



Preparation		Colour characterisation	
0 min	5 min	10 min	15 min
* Recommended time for the customisation of anterior upper and lower jaw in minutes.			

For natural-looking gum areas.



Step 11

After final curing finish the surface with a polisher.



Step 12

Final result of customising an anterior dental arch with Pala cre-active.

Shaping

Finishing

Rework



min

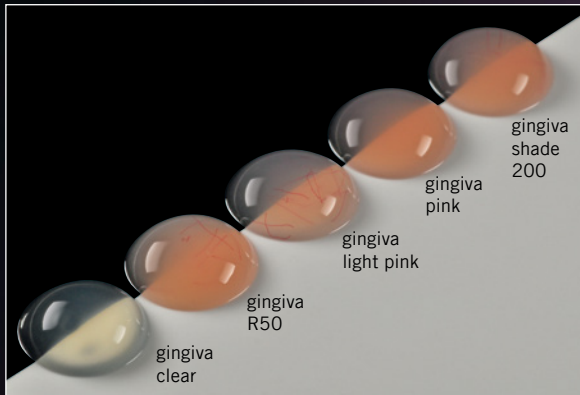
20 min

25 min

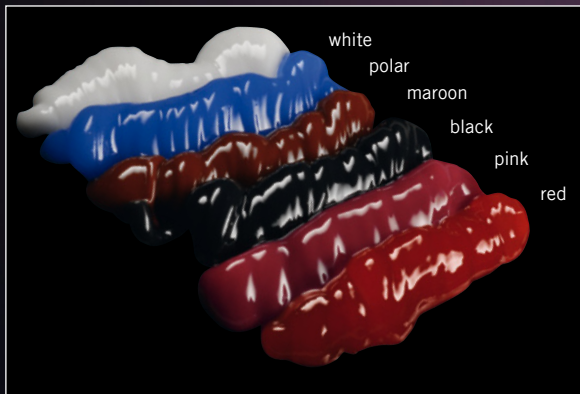
30 min*

Pala cre-active

Step-by-Step Guide



5 gingiva Materials (fig. above) + gum Material
(not illustrated)



6 colour fluids

This Pala cre-active case was developed by Kulzer and does not constitute a complete set of instructions.

Product overview

Pala cre-active

Light curing colourfluid system for the customised characterisation of dentures.

Pala cre-active (set)



Pala cre-active (refills), 1 x 3 g



Delivery form

12x3 g	Pala cre-active (white, polar, pink, red, maroon, gingiva pink, black, gum, gingiva shade 200, gingiva R50, gingiva light pink, gingiva clear)
1 x	Pala cre-active Shade Guide
1 x	brush
20x	cannulae (metal), 1.2 mm
5x	cannulae (plastic), 1.87 mm

Art. code **6603 3445**

Colour

Art. code

Colourfluids	
white	6603 3447
polar	6603 3448
pink	6603 3449
red	6603 3450
maroon	6603 3461
black	6603 3462
Gingiva Materials	
gingiva pink	6603 3463
gingiva shade 200	6603 3464
gingiva R50	6603 3465
gingiva light pink	6603 3466
gingiva clear	6603 3467
gum (pasty)	6603 3468

Palaseal



Delivery form

2x 15 ml Unit package

Art. code **6470 8063**

Signum HiLite pre 2

Pre-polymerisation lamp with mobile charging unit.

You can fix your modelling of flowable composites or Pala cre-active with the pre-polymerization lamp Signum HiLite pre 2 in a quick and easy way regardless, if in stationary or mobile use.



Technical data

Charger power supply input voltage	100–240 V AC, 0.3A max., 50/60Hz
Output power	5V DC, 1A max.
Power of hand-piece rechargeable lithium ion battery	3.7V DC, 700mAh, 2,59 Wh
Light source	LED, 3W, 405 nm (peak wavelength)
Weight of hand-piece in g	77
Dimensions of handpiece, LxØ in mm	120x19
Dimensions of docking station WxHxD in mm	69x215x135

Art. code **6605 9751**

HiLite power 3D

High performance light polymerisation device.

HiLite power 3D is our high-performance light-polymerisation unit for safe and efficient polymerisation of all light-curing dental materials. HiLite power 3D has an user-friendly design, a reliable and strong flashlamp and the choice of six light-curing times of 6, 90 and 180 seconds (for veneering material) and 5, 10 and 15 minutes (for 3D print material).



Technical data

Mains voltage	100/115/230 V
Rated frequency	50/60 Hz
Fuse protection	T 6,3 A
Power consumption	360 VA
Dimensions WxHxD in mm	220x225x330
Weight in kg	9.5

HiLite power 3D

Flash-Light polymerisation device

incl. reflector pot and object holder, 100/115/230V

Art. code **6606 9514**

Product overview

Signum tool kit

Rotating special instruments for processing and polishing composite materials.



Contents

1x	Mepol I
1x	Mepol II
1x	Inpol
1x	Silico
1x	Prepol
1x	Hipol
1x	Fissura 1
1x	Fissura 2
1x	Magnum
1x	Piccolo
1x	Diaface

Art. code **6601 5677**

Signum tool kit (refills)

Delivery form	Art. code
Mepol I, 10 pieces	6600 7708
Mepol II, 5 pieces	6601 5678
Silico, 10 pieces	6601 7723
Prepol, 10 pieces	6600 7652
Hipol, 10 pieces	6600 7707

Signum connector

Light curing bonding agent between prosthetic acrylic materials and light curing veneering materials.



Delivery form	Art. code
1 x 5 ml	6471 4211

Signum HP paste

Polishing paste



Delivery form	Art. code
Stick, 1 x 10 g	6471 2537

Signum insulating gel



Delivery form	Art. code
10g container	6470 6307

Pala denture acrylics

The optimum solution for every indication: Our Pala system has everything you need for manufacturing high-quality prostheses, from the best acrylic to first class accessories.

As a pioneer in the field of prosthetic materials, Kulzer introduced PMMA acrylic into dentistry over 80 years ago. We are continuously applying innovative processes to optimise our Pala denture acrylics for your prosthetic need. All materials are tested and certified for biocompatibility. You can rely on high durability, colour stability, mucous membrane tolerance and great aesthetics for every indication.



Contact in Germany

Kulzer GmbH
Leipziger Straße 2
63450 Hanau, Germany
info.lab@kulzer-dental.com