

PALA®

Product Information



Pala®

That's Prosthetics.

Denture Teeth and Acrylics for the Future.

Giving a hand to oral health.



KULZER
MITSUI CHEMICALS GROUP

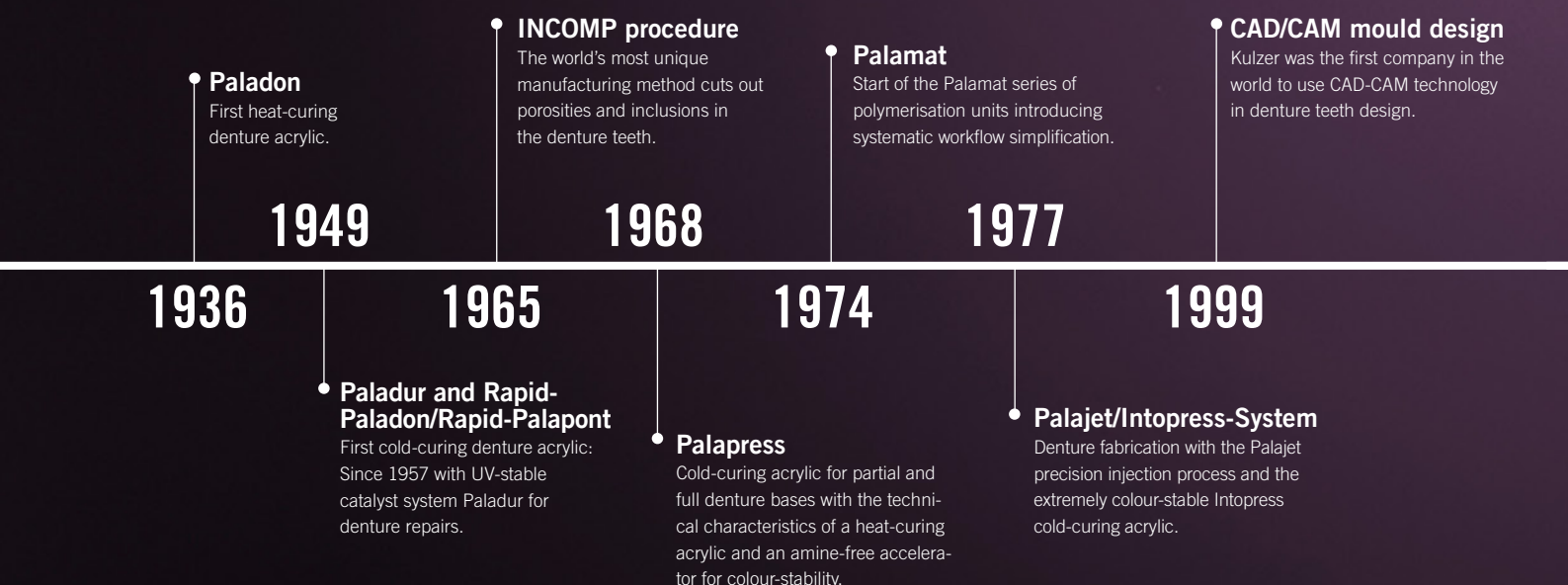
Kulzer – Working hand in hand towards innovative prosthetics.

As one of the world's leading dental companies, Kulzer stands for over 80 years of prosthetic excellence. Pala is the brand name of high quality denture teeth, acrylics, and first-class accessories. The development and production of perfectly matched products is based on many years of experience, modern technology and, not least, precision handcraft.

It is this handcraft which connects Kulzer as a reliable provider of leading products with you, the technician. After all, you use our products every day and know what is important. By placing high demands on the quality and user-friendliness of our products, you also incite us to advance innovation. Together, we work hand in hand for our common success: Highest quality and reliability on which both dentist and patient can rely on at all times. This is Prosthetics. This is Pala.

History – The Pala Success Story.

For over 80 years Kulzer has been true to the company's philosophy: "Things which are for our customers will be successful". We invest specifically in research and development to meet your functional and aesthetic requirements. For the future we will continue our quest.



Pala

Includes the entire range of products needed for fabricating dentures.

Pala. That's Prosthetics – from set up to the completed denture. The Pala processing chain includes all products from model analysis with the PalaMeter, through denture tooth selection with Pala Mix & Match, to transporting denture teeth in the PalaBox.



Take a look at our Pala Videos:
[youtube.com/KulzerDental/playlists](https://www.youtube.com/KulzerDental/playlists)



Find out more about our dental know-how and our Pala products and services at kulzer.com



2000

● **Pala Mondial**
 The only premium quality standard denture tooth assortment. Development of the new highly wear resistant material Nanopearls, which later became Flexecure®.

2008

● **Pala Idealis**
 First posterior denture tooth assortment with true to nature low cusp angle for e.g. functional therapy and geriatric prosthetics.

2014

● **PalaXtreme**
 High impact, self-curing denture acrylic with fracture toughness and very low level of residual monomers

2005

● **Pala Premium**
 First multifunction denture tooth with unique aesthetics and function

2011

● **PalaXpress ultra**
 New cold-curing acrylic with higher fracture resistance than any cold-curing acrylic to date.

2019

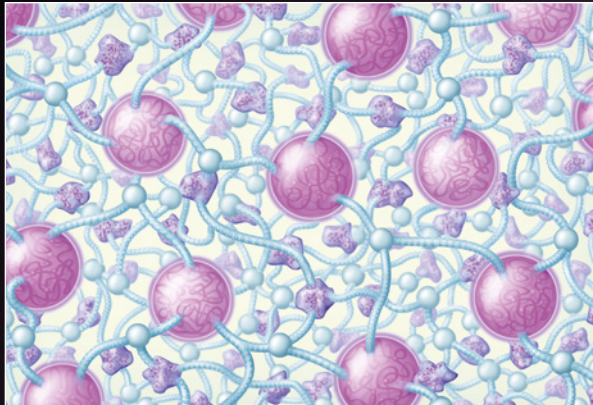
● **PalaVeneer**
 This unique veneering system based on Mix&Match shell teeth offers more room for aesthetics.

Pala

Innovative Technologies for Tooth Longevity.

The high quality of our Pala Premium, Pala Mondial, Pala Idealis denture teeth and our PalaVeneer shell teeth is based on modern fabrication methods and the use of particularly high quality materials. These are, of course, developed and manufactured by Kulzer in Germany: Every Pala Mix & Match denture tooth and veneer shell used worldwide comes from the Pala Production Plant at Wasserburg near Lake Constance.

Flexecure® – for highest abrasion and fracture resistance



- Our patented material is comprised of unique hybrid-fillers combined with a tough-elastic matrix
- The result: high abrasion resistance, natural opalescence and surface quality coupled with high fracture resistance and longevity
- 100% colour stable materials for lasting colour stability



Organic filler with diffusion zone to the matrix



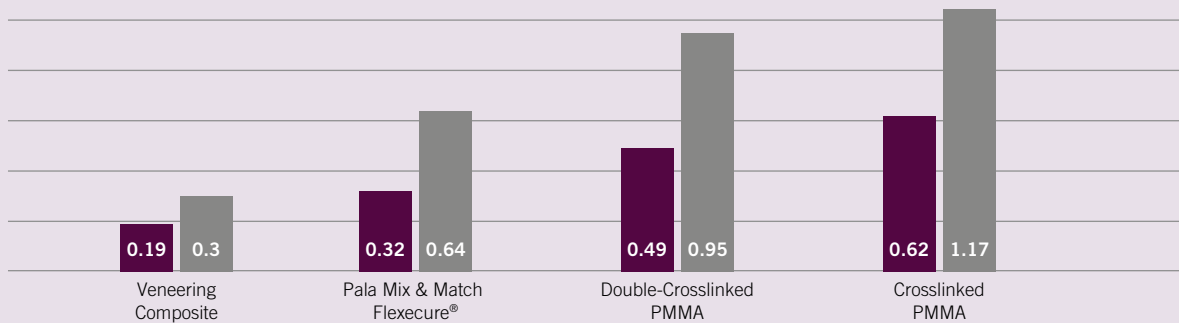
Silan modified fillers in tough-elastic matrix



Highly crosslinked tough-elastic matrix



Wear Comparison of Denture Teeth Materials, 3-Body-Wear-Test based on ACTA-method, Amsterdam

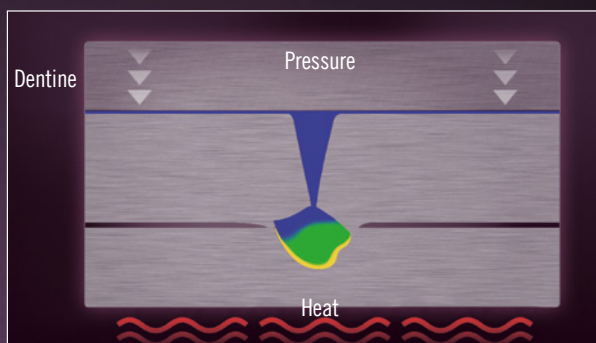


■ Volume loss mm³ 150 thousand cycles
 ■ Volume loss mm³ 300 thousand cycles

Source: Kulzer, R&D Wehrheim

High product quality based on modern fabrication methods.

The INCOMP Process – for porosity free denture teeth



- The worldwide unique fabrication process prevents porosities and inclusions in denture teeth and ensures extreme density
- The result: Reliable quality of every tooth

CAD/CAM technology – for constant high quality



- Computer aided development and fabrication allows the highest precision
- Guaranteed 100% matched pairs, function, and dimensional accuracy
- Always the best, always reliable

PalaVeneer®

More room for perfect results.

The PalaVeneer veneer system based on Pala Premium and Pala Idealis rounds off the product range of the Pala brand from Kulzer perfectly. So there are no limits to your design flexibility as a dental technician.



Björn Maier, Master Dental Technician:

“*The veneers make it easier for the dental technician to plan dental work. The reproducible, oval shape of the PalaVeneers also allows me to produce morphologically supportive tertiary constructions with the help of CAD/CAM technology.*”

PalaVeneer® – The facts

- Maximum attainable overall aesthetic in limited spaces and functionally difficult cases.
- Thin shells, reduced fissure depth and an extended cervical area.
- Trueness to colour, form and function.
- Tooth material Flexecure® for high abrasion stability and fracture resistance.

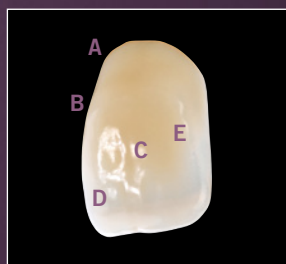
Optimal working



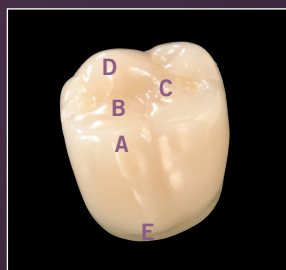
You save time as there is no need for time-consuming grinding of full-contour teeth or individual veneers. Thanks to their reduced thickness, the PalaVeneer veneer shell can be prepared without time-consuming processing. This ease encourages experimentation, for example by varying the positioning of the tooth to see how you can get the very best out of a situation.

Applications

- Model cast prosthetics
- Cover dentures
- Aesthetic try-ons
- Laboratory manufactured temporary restorations



- PalaVeneer 6
- A Wide tooth base
 - B Lifelike labial surface
 - C Natural layering
 - D 3D multilayering
 - E Naturally contoured labial surface



- PalaVeneer 8
- A Lifelike, flat cusps
 - B Lifelike fossa
 - C Shallow fossa
 - D Provision for spot grinding in the incisal edge
 - E Widened base and more volume

Pala Premium

Highest aesthetics for the high demands.

Pala Premium are high-quality denture teeth from Pala. They meet the high demands of lifelike aesthetics and function. They are the only denture teeth on the market aimed specifically at fixed-removable dentures and are easily integrated with residual dentition.



Dr Paulo Malo, president and CEO of the MALO CLINIC Health and Wellness, recommend Premium Denture Teeth from Kulzer:

“ *Our patients expect the best and that's exactly what we give them! We only use Premium teeth in our clinics as no other denture tooth can meet our expectations.”*

Pala Premium – the facts

- Special tooth material Flexecure® for high wear resistance and lifelike opalescence
- Our teeth can be applied to any set-up concept or for eugnathic and disgnathic jaw relationships and give the technician greater flexibility
- Lifelike: True to nature moulds identical with natural teeth
- Hardly distinguishable from residual dentition
- Widened base and increased volume for improved papillae contouring
- Pala Premium is also available as PalaVeneer shell teeth

Anteriors widen the Pala Premium Portfolio

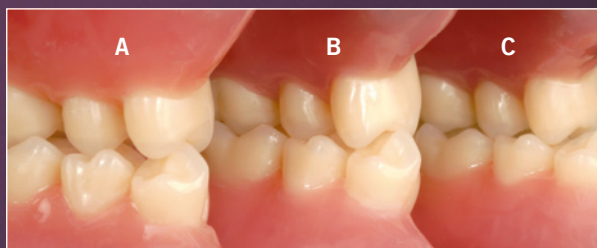


Four additional Pala Premium anteriors are a prominent highlight of the extended Pala Product range. These voluminous anteriors are remarkable for:

- A widened base, greater use of tooth length and depth through greater volume, improved overall aesthetics, easier masking
- Less concave palatal areas means lower lateral forces and higher stability
- Larger proximal areas mean best possible proximal closing and better overall aesthetics
- Rounded canines give patients a more natural appearance

Main application cases:

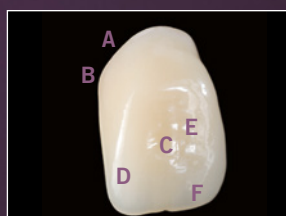
- Fixed-removable prosthetics
- Veneering technique, exclusive full denture prosthetics



Multifunctional Set-up with Pala Premium 8 with the following occlusions:

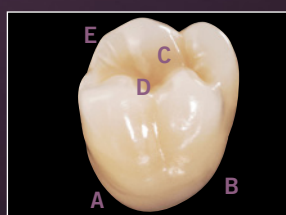
- A Tooth-to-tooth occlusion
- B Tooth-to-two teeth occlusion
- C Combined

Premium 6 Anteriors



- A Variable cervical area
- B Wide tooth base
- C Lifelike labial surface
- D Layering simulates natural teeth
- E 3D-Multilayering
- F Naturally contoured labial surface

Premium 8 Posteriors



- A Variable cervical area
- B Wide tooth base
- C Occlusion design allows lingual and balanced occlusion set-up
- D Width of occlusal surface similar to natural teeth
- E Provision for spot grinding in the incisal edge

Setting new standards – With **Pala Idealis**, the Mix & Match posterior line.

The innovative Pala Idealis posterior denture teeth with their lifelike flat cusps are a good addition to Pala Mix & Match. Their characteristics are tailored to suit geriatric prosthetics.



Fabrizio Molinelli, Dental technician from Italy:

“Pala Idealis fully aligns itself with all current requirements for use on implant superstructures. The combination of aesthetics and functionality is truly outstanding.”

Pala Idealis – the facts

- Perfect coverage of tertiary structures through wider cervical area and high tooth volume
- Better interdental closure and optimal cleanability through bigger proximal surfaces
- Safe and fast set-up through definite bite index and maximized freedom in the centric relation
- Aesthetically and functionally harmonised with the tooth lines Pala Premium & Pala Mondial
- High wear, and break resistance due to our specific material technology.
- The special Pala Idealis morphology reduces excessive initial wear
- Pala Idealis is also available as PalaVeneer shell teeth

Study available!
Visit
kulzer.com/pala

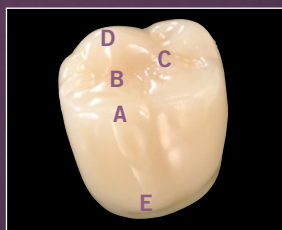
Best possible manufacturing



Pala Idealis aesthetically perfectly integrated

You benefit from the manufacturing process of our new posteriors by easy setting-up for faster processing times and improved incorporation and masking of telescopic restorations. In addition, the unique material Flexecure® of Pala Idealis provides even more reliability through increased fracture resistance.

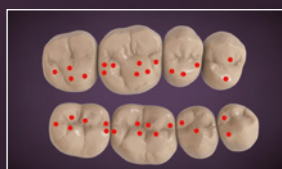
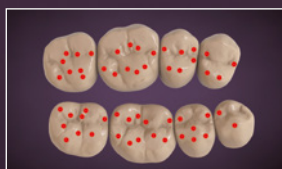
Future Oriented Denture Tooth



The true to nature flat cusp angle of the upper and lower posteriors reduces lateral forces and parafunctional tendencies and keeps early abrasion low. Patients enjoy the best possible oral comfort.

- A Lifelike, flat cusps
- B Lifelike fossa
- C Shallow fossa
- D Provision for spot grinding in the incisal edge
- E Widened base and more volume

Contact points in balanced and lingualised occlusion



Balanced occlusion concept
Tooth-to-two-teeth occlusion

Lingualised occlusion concept
Tooth-to-two-teeth occlusion

Pala Mondial

Proven function that caters for all demands.

Pala Mondial is the time tested denture tooth that meets all the requirements of modern dental technology. It is the first line of denture teeth to feature Flexecure® and guarantees high wear resistance. The large selection of mould designs provides much flexibility when choosing teeth for the denture.



Peter Lerch, Denturist from Switzerland:

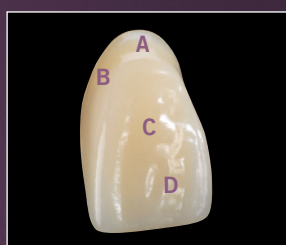


I use Kulzer teeth because they offer me a wide range of possibilities for a safe and individual set-up. Also dentists like the aesthetics and function of dentures made with Kulzer teeth."



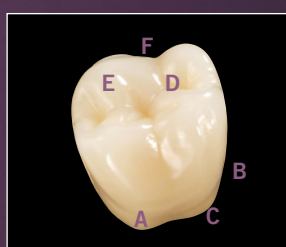
Pala Mondial – the facts

- Fast and unambiguous set-up
- Precisely defined centric means simple set-up
- Precise function without time consuming spot grinding
- Flexecure® guarantees high abrasion resistance and durability
- Lifelike and vivid surface structures match the basic tooth form and appear harmonious.
- Widened tooth base and increased volume aid papillae contouring and eliminate dark recesses and vertical edges.



Mondial Anteriors

- A Variable cervical area
- B Wide tooth base, soft transition
- C Lifelike surface structure
- D Layering + Material = Opalescence



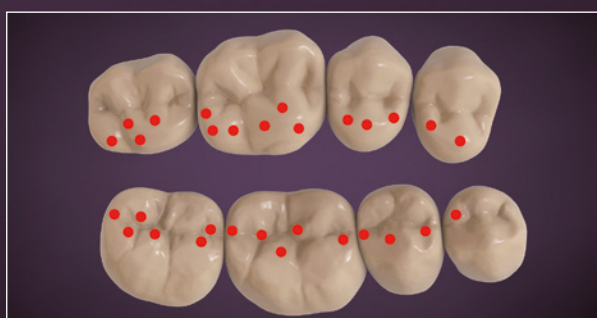
Mondial Posteriors

- A Variable cervical area
- B Wide tooth base
- C Bilaterally digitalised, symmetrical
- D Functionally improved occlusal design
- E Provision for spot grinding in the incisal edge
- F Lifelike cusp design



Set-up in lingualised occlusion with Pala Idealis 8

- Mondial 8 can be combined with Idealis 8 for set-ups of posterior teeth.



- Contact points of a lingualised occlusion with Mondial 8 in the upper jaw and Idealis 8 in the lower jaw.

Pala Acrylics

The best solution for every situation.

Being the inventor of heat-curing and PMMA-based denture acrylics, we set the direction of the market. You can be sure that: Each of our acrylics exceeds all specifications required by International Standards and is subject to rigorous quality control.

Choose your denture acrylic from our Pala programme and you can be sure of durability, colour-stability, mucosal compatibility, and great aesthetics in every indication.

Pala application cases:

Use the following diagrams to help you make your choice. They each symbolise one application case or fabrication technique.

Application case	Product	PalaXtreme	PalaXpress	Palapress	Palapress vario	Paladon 65	Paladur

Implant supported denture	Full dentures	Partial dentures	Dental splints
Repairs	Pouring	Injection	Press-Pack

Please note: not every fabrication method can be applied to each indication. Please refer to the Instruction for use for more details.

* Note: Longer liquid phase



The benchmark in prosthetics.
Past, Present and Future.

In 2016, we celebrated 80 years of Pala. The success story began over 80 years ago 1936 with the invention of Paladon®, the first heat-curing denture acrylic. Pala® from Kulzer now stands for aesthetic, efficient and long-lasting prosthetics solutions worldwide. With its large selection of high-quality denture acrylics, artificial teeth and accessories, Pala from Kulzer is now the all-round system for effective prosthetics.

PalaXtreme® – Strong choice. Tough dentures.

High-impact, self-curing denture acrylic for special applications



A strong base is key to a long-lasting and high-quality denture: PalaXtreme offers a unique combination of benefits to achieve this goal.

With PalaXtreme you get high-impact strength and excellent handling characteristics. The “core shell technology” minimises the risk of fractures. Due to its high viscosity this high-impact denture acrylic works perfectly with the pouring or the injection technique.

- Designed for special applications such as implant based dentures
- Adds to the prevention of impact damage and therefore avoidance of time-consuming warranty repairs
- Its unique formulation offers a broad range of processing options, with injection and pouring techniques
- Low level of residual monomers: 1.4%¹
- Various gingiva colour options (known Pala shades) and a clear colour option are available



¹Source of Data: Sample value of PalaXtreme. Research & Development, Kulzer Wehrheim, unpublished data. Data on file.

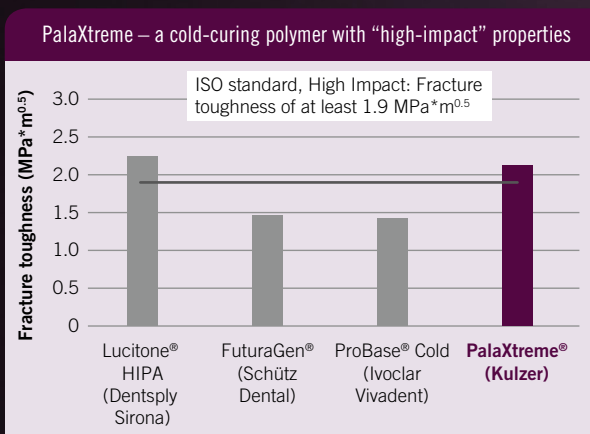


Fig. 1: Average fracture toughness [MPa*m^{0.5}] of the denture base materials tested.

Source

University of Erlangen-Nuremberg 2018 test report. Unpublished data. Documentation available.

The report was summarised. The figures and heading were created by Kulzer.

	X	X	X	X	X
	X		X		

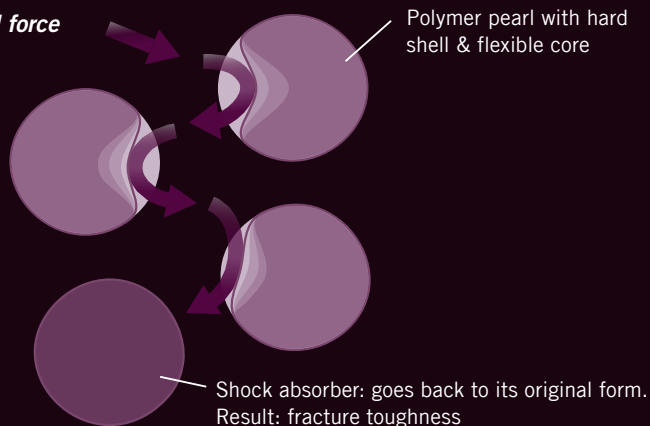
PalaXtreme®

Everything you need to deliver quality that lasts

PalaXtreme is one of the first self-curing dental acrylics to pass both ISO 20795 tests of maximum stress intensity (fracture toughness = $2.6 \text{ MPa}\cdot\text{m}^{1/2}$) and total fracture of work (fracture work = $1,122 \text{ J/m}^2$), making it an excellent choice for implant-based dentures. This high fracture toughness is based on the “Core Shell Technology” – polymer pearl with a hard shell and a flexible core. The flexible core acts as a shock absorber to stop the spread of microscopic damage.

Core Shell Technology: Polymer pearl with flexible core

Pressure/external force



Fracture toughness is a measure for break resistance. PalaXtreme is highly break resistant and therefore perfect for implant supported dentures.

One-of-a-kind combination

Specialised acrylic

PalaXtreme is designed for special applications such as implant based dentures.

Whether you prefer pouring or injection technique, PalaXtreme works perfectly for either option. Making it a flexible choice for your individual needs.

Strength

Minimised warranty repairs due to high-impact properties: PalaXtreme boasts high fracture toughness thanks to the new “Core Shell Technology”. This helps to prevent chipping, cracks and visual defects of any kind.

Colour stable

PalaXtreme is colour stable and offers a clear version, e.g. for dental splints.

Low residual monomers

PalaXtreme shows very low levels of residual monomers (1.4 %¹).

¹ Source of data: Sample value of PalaXtreme. Research & Development, Kulzer Wehrheim, unpublished data. Data on file.

PalaXpress®

The precisely fitting universal denture acrylic.

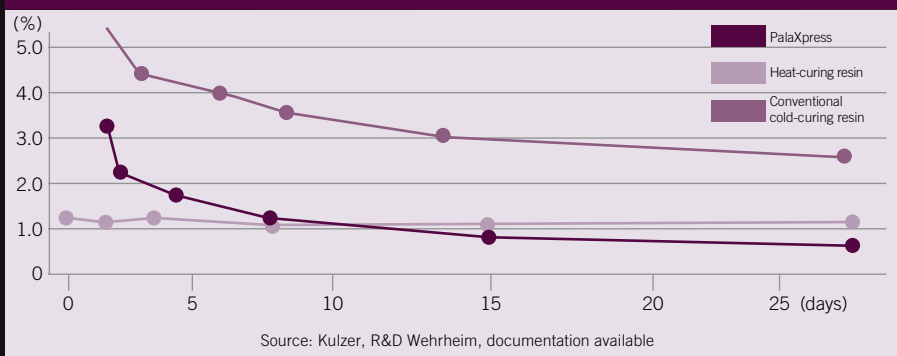


PalaXpress is the material for a lot of indications with acrylic prosthetics. Its unique formula provides a wide choice of either pourable or injectable processing. Remarkable: You can pour several denture saddles in one procedure thanks to approximately 10 minutes pouring time.

The advantages in summary:

- Universal denture acrylic for a lot of indications
- High precision with Palajet
- Colour consistency of full and partial dentures or repairs
- Pour several saddles in one procedure
- Completion of opposite saddle without intermediate polymerisation
- Very good mucosal compatibility thanks to low amount of residual monomer
- Colour stability thanks to catalyst system
- Unique feed system of Palajet injection process
- Cadmium free

Comparison of Residual Monomer Content PalaXpress



	Partial denture	Full denture	Overdenture	Repair	Injection
Palajet	X	X			X
Injectable	X				

Palapress® / Palapress® vario – The classic self-curing denture acrylic.



Palapress and Palapress vario are denture acrylics for repair work, rebasing, and adding saddles to partial denture bases. Thanks to their particular handling characteristics, all tasks are completed safely, simply, and very efficiently.

The best thing: You can distinctly improve your fabrication process by utilising the different polymerisation sequences of Palapress and Palapress vario.

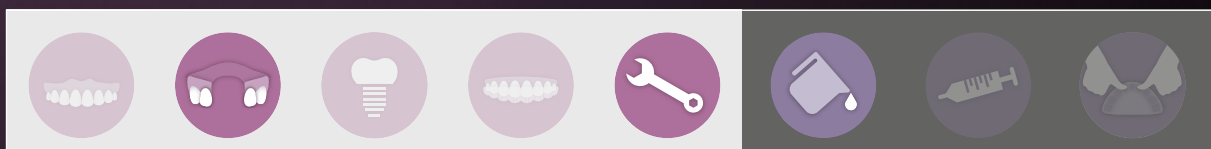
Palapress vario for adding up to two saddles in one session, indirect rebasing, restorations, and enlargements.



Compact Knowledge: Consistent denture colours

A “beautiful” and natural-looking denture colour is the precondition of aesthetic dentures. Pala offers a wide range of veined or unveined colours. Every batch is colour-metrically measured during production to reduce variations within the complicated mixture of pigments. This is how we guarantee batch to batch and product to product colour consistency. You achieve the best possible aesthetic results even with a combination of different materials.

It goes without saying that all Pala denture materials are cadmium free.



Paladon® 65

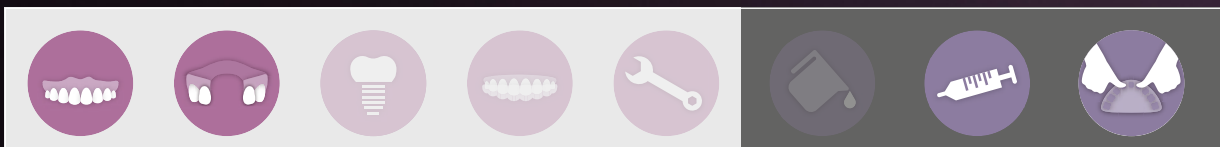
The proven heat-curing denture acrylic.



Acrylic for full dentures. We have been setting standards in prosthetics since 1930 with Paladon, the first ever heat-curing denture acrylic. The development of Paladon to Paladon 65 is still today valued for its special mechanical characteristics. Paladon 65 is therefore very widespread. Its pleasingly pliable consistency allows the acrylic to be easily packed. The unusually long working time gives you the freedom to fabricate several dentures at the same time.

The advantages in summary:

- Long working time allows fabrication of several dentures at once
- Dentures with long term stability
- Colour stable
- Low residual monomer after fabrication
- Available in four colours
- Best possible colour coordination with other Pala denture materials
- Cadmium free



Paladur® –

The cold-curing acrylic for repairs.



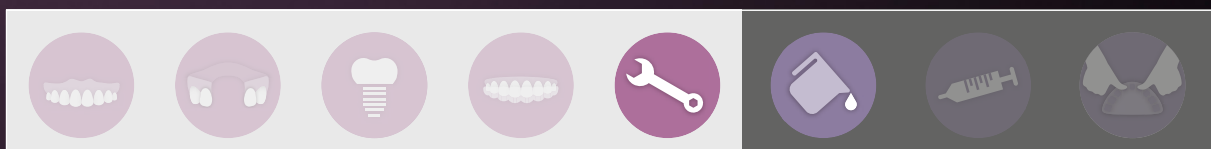
Paladur is our rapid cold-curing denture acrylic for the repair and efficient restoration of dentures. Thanks to a coordinated formula, hardening of thin layers is possible in polymerisation units without additional technical effort. Simple and efficient enlargements and additions, replacing missing teeth, as well as partial and full rebasing. Paladur's excellent physical characteristics make it the ideal acrylic for quick repairs.

Characteristics and advantages in summary:

- Easy to use pourable liquid consistency
- With thin layers also for use without pressure curing unit
 - no need for more equipment
- Available in four colours
- Colour coordination with all other Pala denture acrylics
- Cadmium free

Compact Knowledge: Heat and Cold-curing

Heat and cold-curing acrylics have very different chemical and physical characteristics. Dentures made from heat-curing acrylics reach their final material values directly after polymerisation. Cold-curing acrylics, on the other hand, “improve” their characteristics within the following 12 – 24 hours. That is why these dentures should be placed in warm water after fabrication – ideally over night. This way, the patient receives a denture at its functional and compatible best from the very start.



Palajet®/ Palajet® duoflask

The pneumatic injection unit for full dentures.

Our injection unit is not only suited to match Pala denture acrylic's material characteristics exactly, but is also very easy to use. The ingenious feed system cuts out dosage errors and the working characteristics are always identical.

Injecting:

The piston presses the premixed acrylic dough into the flask. The injection moves from bottom to top: This allows even, bubble free filling. Once the lever has been activated, the injection process begins automatically. At cold curing materials the flask remains a further 5 minutes in the injection unit before final polymerisation takes place.

The advantages in summary:

- No increase in vertical dimension
- High precision and excellent fit
- Hardly any finishing needed
- Easy to operate
- Maintenance-free
- Effortless operation

For our Dental Science informations about Palajet please take a look at: kulzer.com/palajet



Palajet duoflask: Preparing and polymerising two dentures in one go.

Palamat® Premium

The next-generation: One water-bath polymerisation device for all.



Display protected from splashing by design and water-resistant keypad



Unlike touchscreens, buttons work with wet hands or gloves



Convenient water drainage location with self-sealing plug-in connector



Fits standard articulators or six dentures

Palamat Premium offers a new, space-saving design, but it's actually bigger inside, where it counts.

The unit features a wider opening and greater capacity than the previous model, so even articulators can fit inside. It's the only device dental technicians need to cover most indications and polymer types.

The new pressure pot offers intuitive, colour-coded programmes for heat and cold-curing denture acrylics via water bath with compressed air. The device's software delivers more flexibility: Simply select from a range of pre-set programmes, adapt them to fit your changing needs, or determine your own parameters manually – all through an easy to read, large full-colour LCD display.

Benefits:

User friendly

- Temperature, pressure & time always visible
- Automatic with 2-click start or manual customization possible, ergonomic & intuitive
- Visual guidance via colour-coded programmes
- Icon-based, interactive operating menu

Everyday simplicity

- Wider opening, larger capacity & smaller footprint
- Fits standard articulators or six dentures
- Proven pressure lock system
- Quick, precise temperature control
- Wide range timer (up to 9h 59min & perpetual loop)

Clean-lab design

- Optimised surface for easy cleaning
- Improved water drainage

The full package

In summary, technicians benefit from: a wider opening and larger capacity paired with a space-saving design; colour-coded programs or flexible manual operation; an intuitive user interface and a clear overview of time, pressure and temperature parameters.

PalaVeneer Dentine®

The tooth-coloured self-curing acrylic.



PalaVeneer Dentine is a PMMA-based cold-curing acrylic for the bonding of PalaVeneer. With 16 Vita shades and an incisal material, it has all sections of the colour spectrum covered. Due to the outstanding processing properties, PalaVeneer Dentine can be integrated into daily workflows with no problems at all.

Range of application cases:

- Fixing and backing PalaVeneer shells on metal frame-works
- Fixing and backing milled acrylic teeth on metal frame-works
- To restore/bond facets
- To produce long term temporaries (facet technique)
- To aesthetically finish pre-fabricated teeth

The advantages at a glance:

- Colour-coordinated to PalaVeneer shells
- Excellent working consistency
- Great polishing characteristics
- Excellent bond between PalaVeneer Dentine and Pala-Veneer shells
- Optimal working time

Pala cre-active®

The light-curing colourfluid system for natural-looking dentures.



The light-curing colour fluids from Pala cre-active are used for the individual characterisation of denture base materials. In combination with Signum connector, it is virtually unrivalled in the individualization of partial and total dentures and implants.

The denture acrylic is roughened by means of sandblasting (50 µm) or using a diamond. After the exposure time and polymerisation of Signum connector, Pala cre-active can then be applied in the shade and consistency of choice. Pala cre-active is available in 12 shades with different consistencies in a set and as refills. The range of available consistencies and shades allows the creation of highly individualised gingival areas.



The advantages at a glance:

- Easy, fast application.
- Corrections can be made quickly.
- Intensive colourfluids (stains) in 6 different shades.
- Gingiva materials as a base in 6 different hues.
- Good grinding and polishing characteristics

Pala Polish

Cream for polishing denture acrylics



Pala Polish is a denture polishing cream designed to quickly and easily polish all types of acrylic appliances. This unique polishing formula offers a high shine and special characteristics allowing residual scratches to be removed during the polishing process and eliminates the need for pumicing.

Range of application cases:

- Dentures
- Partial dentures



The advantages at a glance:

- Simultaneously removes scratches and leaves a high shine on dental appliances
- No need for pumice
- Reduces finishing and polishing time
- Allows technician to polish at their normal workbench in a dry environment
- Reduces the amount of different polishing pastes required as it can be used on various materials

Pala Accessories

The Complete Selection for Quality Prosthetics.

Besides high-quality denture teeth and acrylics, Pala offers a range of essential accessories for economic dental technology.



Aislar – the alginate based universal separating solution

Good separation is the basis for well fitting denture restorations. Aislar fulfils the many requirements of both heat and cold-curing acrylics:

- Perfect separation of acrylics/gypsum and composite/gypsum
- Smooth surfaces
- Unimpaired curing of denture surfaces
- High precision (no layer forming)
- Short drying time
- Good shelf life



Palaferm. Good insulation is the basis for a precisely fitted prosthetic restoration.

Palaferm was specially developed for the insulation of acrylics and acrylic models and is also suitable for the insulation of plaster. A single coat painted on the acrylic produces a wafer-thin insulation film which can easily be removed again manually later.



Palabond – the reliable bond between denture material and acrylic denture teeth

Functional and durable dentures need a stable and secure bond between denture material and denture teeth. Used consistently, Palabond transparent bonding agent prevents denture teeth from breaking off. Palabond increases the bond between denture teeth and denture base, as well as the bond between repair material and base material.



Palatray XL – light curing tray material

Larger, anatomically pre-shaped tray material suited for fabricating:

- Functional and custom impression trays
- Bite registration
- Trial bases
- Gothic arch registration

The material is delivered in a solid plastic box. A special aroma card emits a pleasant smell of peaches.

PalaMeter

The versatile prosthetic measuring instrument.

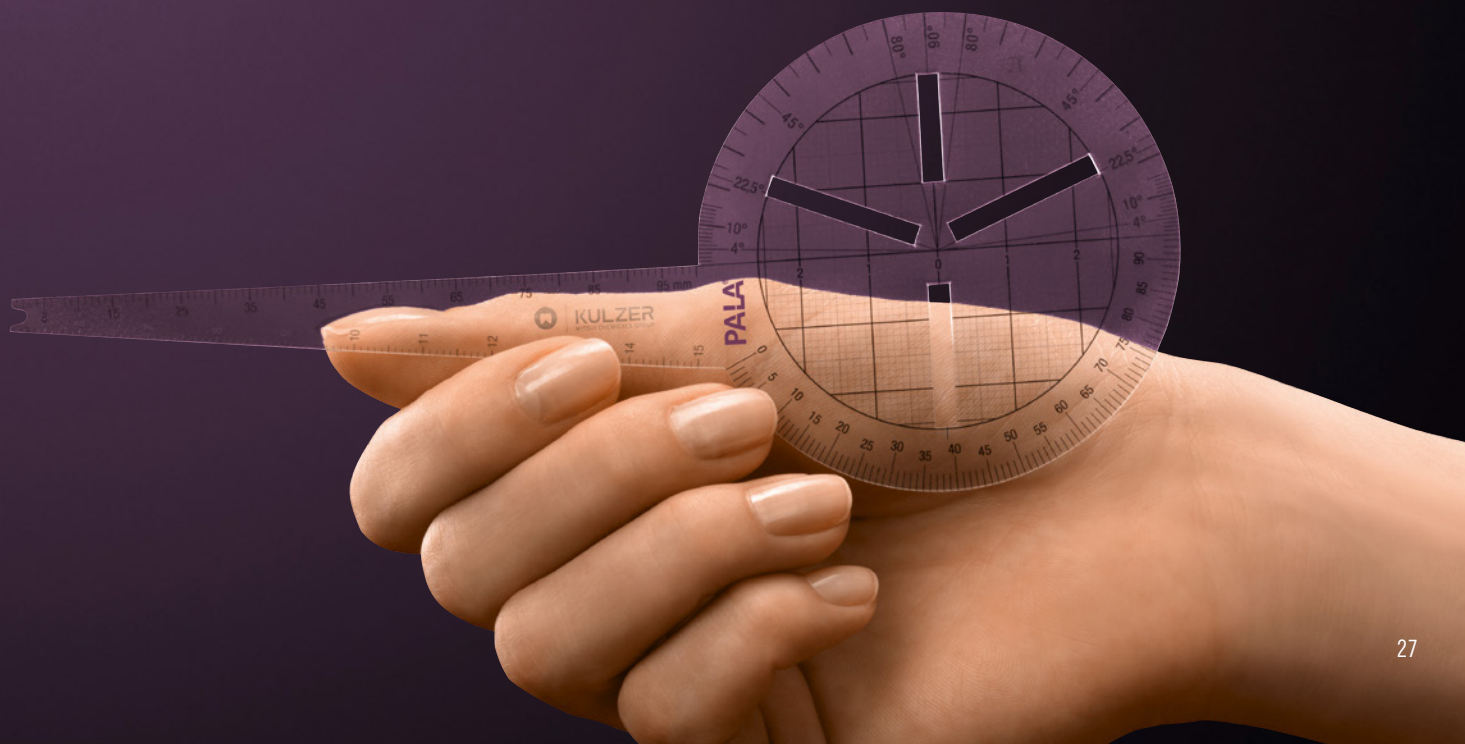
The PalaMeter is a tool developed in cooperation with dental technicians and dentists to simplify daily work considerably. It unites numerous measurement methods in one intelligent aid and is thus completely suited to your requirements.

- Simple to use
- Particularly well laid out
- Versatile use
- Universally applicable by uniting previous dental measurement tools
- Very low cost

Discover the many possibilities of the PalaMeter with our new step-by-step guide at kulzer.com.

Choose your Pala denture teeth as a result of the quickly and simply won measurements – just as quickly and simply with our innovative PalaSelect 1 tool.

You don't have a PalaMeter or Pala Select tool? Please ask your Kulzer sales representative!



Sharing knowledge means gaining trust – Pala. That's Prosthetics.



Pala Xtreme
High impact, self-curing denture acrylic with fracture toughness and very low level of residual monomers



Pala Xpress
Universal cold curing denture material



Palapress
Pourable, cold curing denture material



Palapress vario
Pourable, cold curing denture acrylic with longer working time

Delivery form	Art. code
80 ml liquid	66077039
500 ml liquid	66070953
100 g-powder	
pink	66070960
light pink opaque	66070961
light pink veined	66070962
R50 veined	66070963
clear	66070964
pink live	66070965
light pink	66070968
light reddish pink	66070969
shade 200	66070970
ethnic shade	66070971
1000 g-powder	
pink	66070972
light pink opaque	66070973
light pink veined	66070974
R50 veined	66070975
clear	66070976
pink live	66070977
light pink	66070978
light reddish pink	66070979
shade 200	66070981
ethnic shade	66070982
12000 g-powder	
pink	66070983
light pink opaque	66070984
light pink veined	66070985
R50 veined	66070986
clear	66070987
pink live	66070988
light pink	66070989
light reddish pink	66070990
shade 200	66070991
ethnic shade	66070992

Delivery form	Art. code
80 ml liquid	64711631
500 ml liquid	64710513
100 g-powder	
pink	64711630
pink opaque	64712763
pink veined	64714991
clear	64711693
R50 veined	64714992
pink live	66020112
1000 g-powder	
pink	64710515
pink opaque	64712764
pink veined	64710516
clear	64711485
R50 veined	64711398
pink live	66020111
12000 g-powder	
pink	64712432

Delivery form	Art. code
80 ml liquid	64707784
500 ml liquid	64707785
100 g-powder	
pink	64707794
pink veined	64707796
clear	64707798
500 g-powder	
pink	64707805
clear	64707809
1000 g-powder	
pink	64707814
pink opaque	64707815
pink veined	64707816
clear	64707817
R50 veined	64707818
12000 g-powder	
pink	64712428

Delivery form	Art. code
80 ml liquid	64707863
500 ml liquid	64707864
100 g-powder	
pink	64707870
clear	64707873
500 g-powder	
pink	64707879
clear	64707882
1000 g-powder	
pink	64707889
pink opaque	64707890
pink veined	64707891
clear	64707892
R50 veined	64707893
12000 g-powder	
pink	64712430



Paladur
Cold-curing acrylic for repairs



Paladon 65
Heat curing denture acrylic



PalaVeneer Dentine
Tooth coloured cold curing denture acrylic for deposition



Pala Lab Putty
High Definition Laboratory A-Silicone putty material

Delivery form	Art. code
80 ml liquid	64707937
500 ml liquid	64707938
100 g-powder	
pink	64707945
clear	64707948
500 g-powder	
pink	64707954
pink veined	64707956
clear	64707957
1000 g-powder	
pink	64707963
pink veined	64707965
clear	64707966
R50 veined	64707967

Delivery form	Art. code
80 ml liquid	64707673
500 ml liquid	64707674
100 g-powder	
pink	64707687
500 g-powder	
pink	64707699
1000 g-powder	
pink	64707706
pink veined	64707708
clear	64707710
R50 veined	64707711
12000 g-powder	
pink	64712424

Delivery form	Art. code
80 ml liquid	66057637
25 ml liquid	66057636
35 g powder	
A1	66057540
A2	66057565
A3	66057566
A3,5	66057567
A4	66057568
B1	66057569
B4	66057622
C1	66057623
C2	66057624
C3	66057625
C4	66057626
D2	66057627
D3	66057628
D4	66057629
I	66057632
Test Set, A3	66057633
Set, 6 Shades + liquid	66057634

Delivery form	Art. code
Shore A hardness 90	
3 kg (2x 1,5 kg)	66057432
10 Kg (2x 5 kg)	66057433
Shore A hardness 65	
2,6 Kg (2x 1,3 kg)	66057434
9 Kg (2x 4,5 kg)	66057435



Pala cre-active
Light-Curing Colorfluid System



Palabond
Secure bonding agent for use between denture material and acrylic teeth



Aislar
Complete isolation for acrylic dentures



Palaferm
Insulation of plaster and printed models

Delivery form	Art. code
set	66033445
refills 1x3g	
Colourfluids	
white	66033447
polar	66033448
pink	66033449
red	66033450
maroon	66033461
black	66033462
Gingiva	
gingiva pink	66033463
gingiva shade 200	66033464
gingiva shade R50	66033465
gingiva light pink	66033466
gingiva clear	66033467
gum	66033468

Delivery form	Art. code
45 ml bottle	64708082

Delivery form	Art. code
80 ml-bottle	6470 8055
500 ml-bottle	6470 8057
1000 ml-bottle	6470 8058

Delivery form	Art. code
80 ml bottle	6470 7627



Palajet duoflask
Double flask for Palajet

Art. code
64715798



Palajet singleflask
Single flask for Palajet

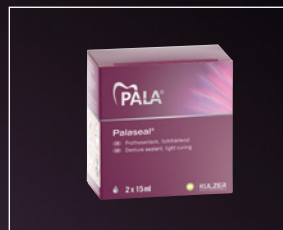
Art. code
64710524



Palajet
Pneumatic injection unit



Palamat Premium
One water-bath polymerisation device for all



Palaseal
Light-curing denture and sealing resin

Pekatray

Delivery form

Base unit incl. injection, cylinder with cover,
1 Palajet Duoflask,
12 inserts for injection cylinder incl. 12 lid inserts,
50 sealing disks,
1 Pala dosing cup,
1 Pala mixing cup,
1 Pala mixing spatula,
sprue wax (32 strips – Ø 7 mm, 32 strips – Ø 3 mm),
timer,
flask filling basket

Art. code

66020450

Delivery form

pressure pot with intuitive, colour-coded programmes for heat and cold-curing denture acrylics via water bath with compressed air; fits very large articulators or six dentures

Art. code

66076559

Delivery form

Unit package
2 x 15 ml
Palaseal

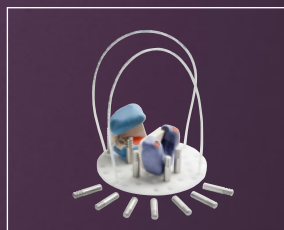
Art. code

64708063

Delivery form

1.800 ml liquid 65246461
750 ml liquid 65237012
1 kg powder 65237004
3.7 kg powder 65246445

Art. code



Palamat elite
Flexibel designed cuvette filling tray

Art. code

66056911



PalaPolish
Cream for polishing denture acrylics

Delivery form

80g

Art. code

66067855

Additional PALA products

Product/ Delivery form	Art. code	Product/ Delivery form	Art. code	Product/ Delivery form	Art. code	Product/ Delivery form	Art. code
Palatray XL light-curing plate material 50 pieces in box	64715806	PalaXpress sprue wax 32 strips x 7 mm, 32 strips x 3 mm	64710520	Pala acrylic fibres For independ- ent preparation of veined den- ture material and for customising dentures	64708090	Powder bottles, For 100 g, 5 pieces	64708097
PalaXpress inserts for injection cylinder 12 count, includes 50 sealing discs	64710519	PalaXpress dosing cup for use with the Palajet system 1 piece	64710521	PE cut-outs For test press- ings of heat- curing acrylics (e.g. Paladon ultra / Paladon 65) fabricated in press and pack technique approx. 80 pieces, 100 x 80 x 0.025 mm	64708087	Pala mixing cup For clean mixing of our denture acrylics	64708088
20 count, includes lids	64714213	Foils for mixing plate 20 cm, 100 pieces For clean mixing of laboratory silicones	64708085	Brown glass bottles, 80 ml For optimised dosage of small portions of den- ture material (liquid) 5 pieces	64708096	Pala dosing cup For dosing rela- tively large quantities of denture material 1 piece	64708098
PalaMeter The versatile measuring instrument for prosthetics.		Pala mixing spatula, 1 piece, metal	64708089	Brush for Aislar For optimal implementation of universal iso- lation 5 pieces	64708092	Pala shade guide For optimised colour choice 1 piece	64712020
Introductory package Instructions with a PalaMeter	66046015						
Three Pala- Meter Pack- age Instructions with three PalaMeters	66046016						



Pala Idealis

Innovative posterior denture teeth with lifelike flat cusps.

Delivery form Pala Idealis 8

Shades: 16 shades, A1–D4;
2 shades, bleach BL2–BL3

Moulds: 4 upper posterior moulds
4 lower posterior moulds



Pala Premium

High aesthetic teeth for high demands.

Delivery form Pala Premium 6

Shades: 16 shades, A1–D4;
2 shades, bleach BL2–BL3

Moulds: 14 upper anterior moulds
8 lower anterior moulds

Delivery form Pala Premium 8

Shades: 16 shades, A1–D4;
2 shades, bleach BL2–BL3

Moulds: 4 upper posterior moulds
4 lower posterior moulds



Pala Mondial

Proven function that caters for all demands.

Delivery form Pala Mondial 6

Shades: 16 shades, A1–D4;
2 shades, bleach BL2–BL3

Moulds: 18 upper anterior moulds
10 lower anterior moulds

Delivery form Pala Mondial 8

Shades: 16 shades, A1–D4;
2 shades, bleach BL2–BL3

Moulds: 5 upper posterior moulds
5 lower posterior moulds

Study available!
Visit
kulzer.com/pala

PalaVeneer

The unique thin shells offer more room for aesthetic.

Delivery form PalaVeneer 6

Shades: 16 shades, A1–D4

Moulds: 9 upper anterior moulds
3 lower anterior moulds

Delivery form PalaVeneer 8

Shades: 16 shades, A1–D4

Moulds: 3 upper posterior moulds
3 lower posterior moulds



Contact in Australia

Kulzer Australia Pty Ltd
20/53 Lorraine Street
PEAKHURST, NSW, 2210
info.australia@kulzer-dental.com

kulzer.com/australia